

NOTE: This map was prepared for assessment purposes only, and is not intended to illustrate legal status of easements, proceedings over local ordinances, or other matters concerning size or use of any parcel should be obtained from recorded documents and local governing agencies.

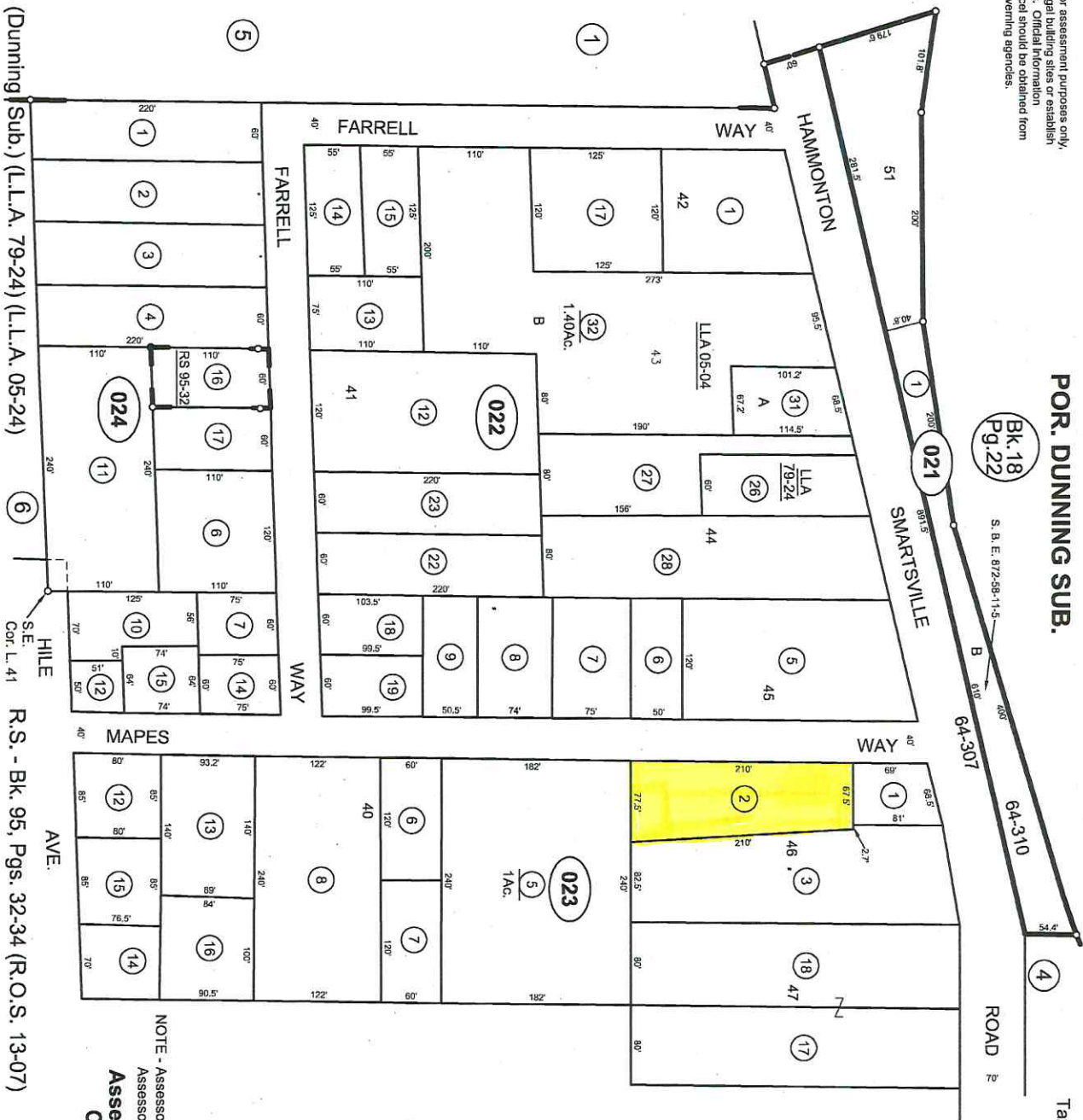
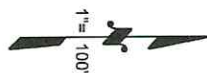
POR. DUNNING SUB.

**Bk. 18
Pg. 22**

S. B. E. 872-99-11-5

Tax Area Code
64-307
64-310

21-2



NOTE - Assessor's Block Numbers Shown in Ellipses
Assessor's Parcel Numbers Shown in Circles
Assessor's Map Bk. 21, Pg. 2
County of Yuba, Calif.

Formerly 7-30, 31/73
11/15

R.S. - Bk. 3, Pg. 14 (Dunning Sub.) (L.L.A. 79-24) (L.L.A. 05-24)

R.S. - Bk. 95, Pgs. 32-34 (R.O.S. 13-07)

021 - 023 - 002 - 000