

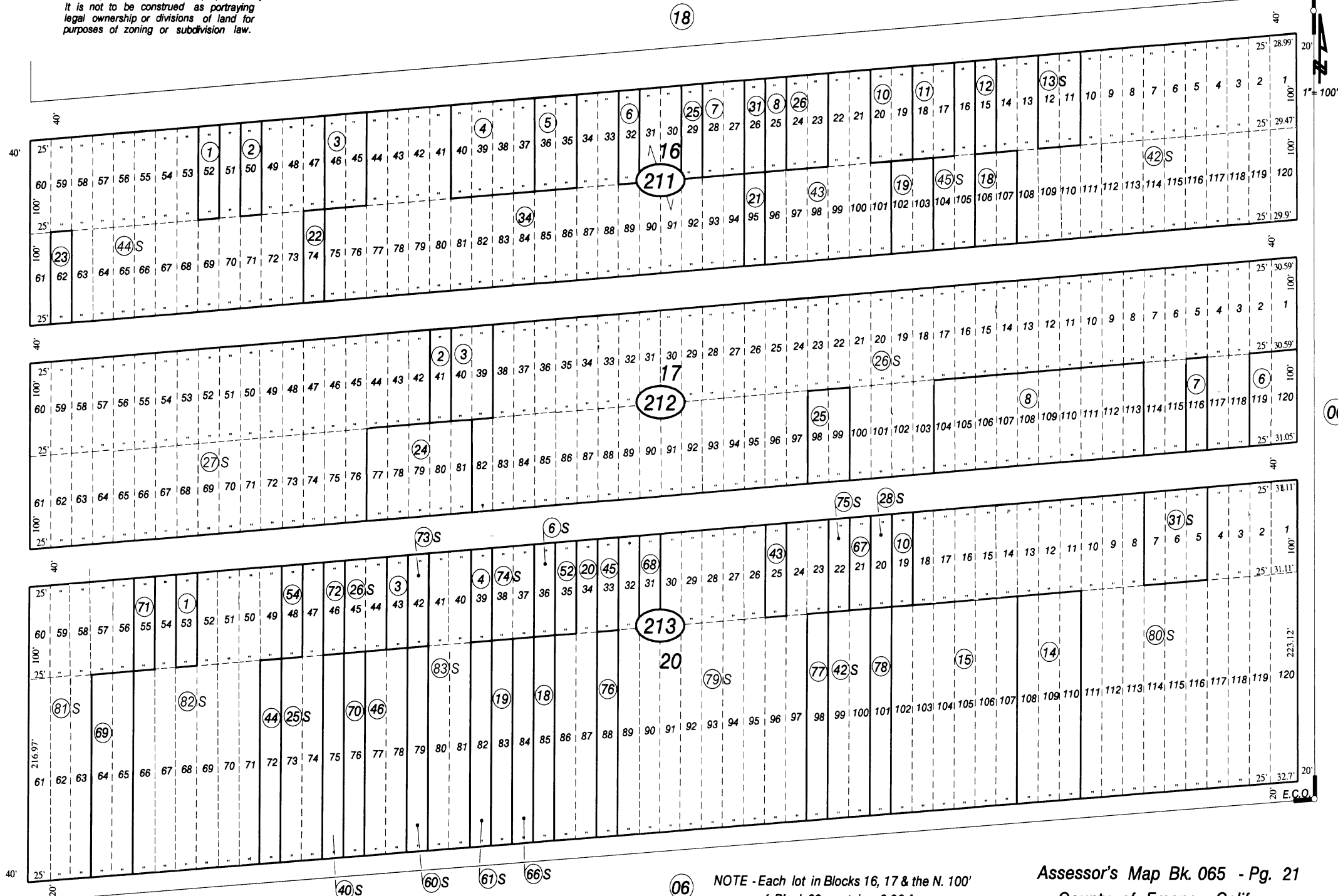
--- NOTE ---

This map is for Assessment purposes only.  
It is not to be construed as portraying  
legal ownership or divisions of land for  
purposes of zoning or subdivision law.

SUBDIVIDED LAND IN POR. SEC. 30, T. 19 S., R. 16 E., M. D. B. & M.

Tax Rate Area  
77-005

065-21



NOTE - Each lot in Blocks 16, 17 & the N. 100' of Block 20 contains 0.06 Ac.

NOTE - Assessor's Block Numbers Shown in Ellipses.  
Assessor's Parcel Numbers Shown in Circles.

Assessor's Map Bk. 065 - Pg. 21  
County of Fresno, Calif.