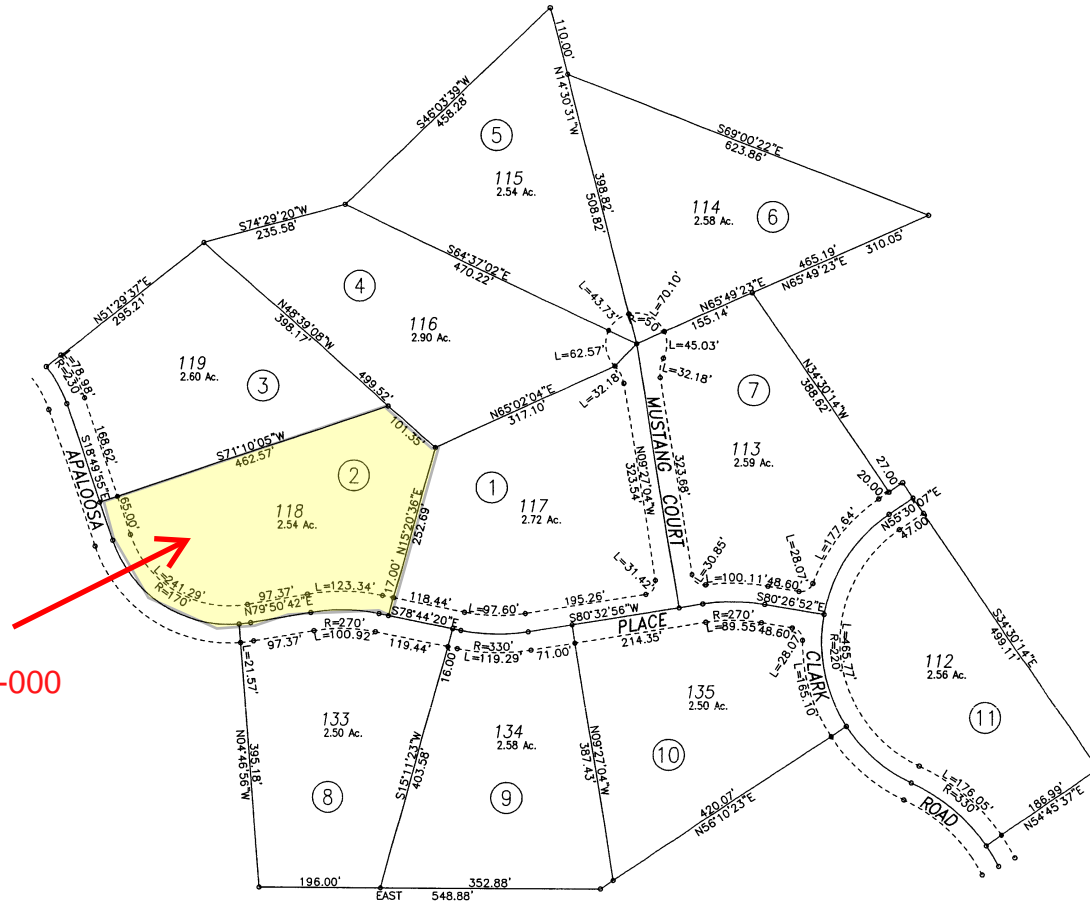
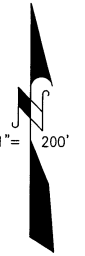


KLAMATH RIVER COUNTRY ESTATES UNIT 3

RECORDED IN T.M.B. 4 PAGE 133
ON OCT. 31, 1968

Tax Area Code
121-01

103-37



103-370-020-000

NOTE: This map is for assessment purposes only and is not for the intent of interpreting legal boundary rights, zoning regulations and/or legality of land division laws.

Siskiyou County Assessor's Office
March 1969
AutoCAD 2004

CAD/joc