

104-200-040-000

# KLAMATH RIVER COUNTRY ESTATES

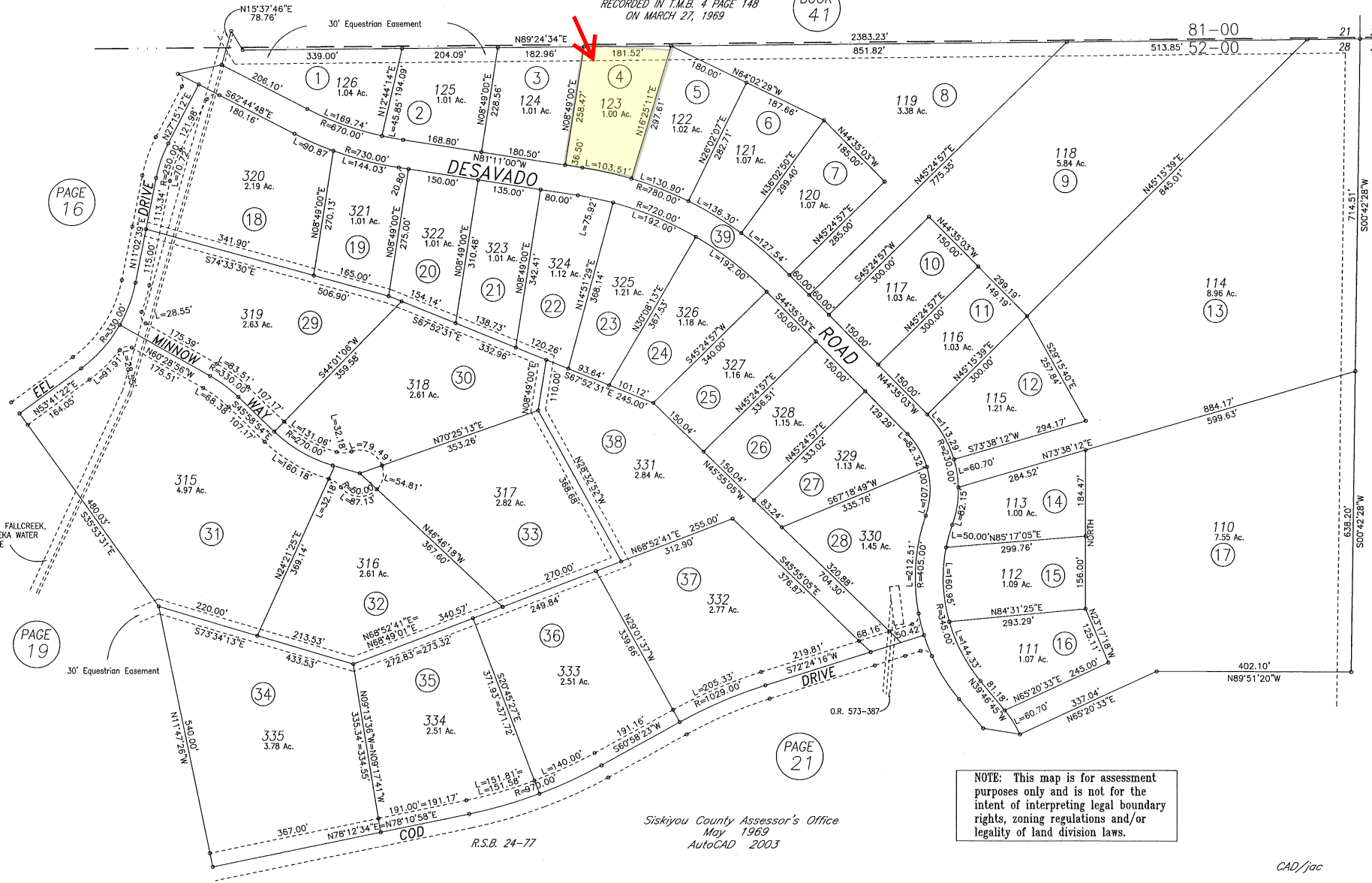
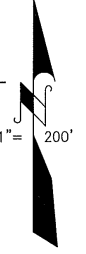
## UNIT 4

RECORDED IN T.M.B. 4 PAGE 148  
ON MARCH 27, 1969

BOOK 41

Tax Area Code  
52-00

104-20



PAGE 16

PAGE 19

PAGE 21

BOOK 41

NOTE: This map is for assessment purposes only and is not for the intent of interpreting legal boundary rights, zoning regulations and/or legality of land division laws.

Siskiyou County Assessor's Office  
May 1969  
AutoCAD 2003

R.S.B. 24-77

CAD/jac