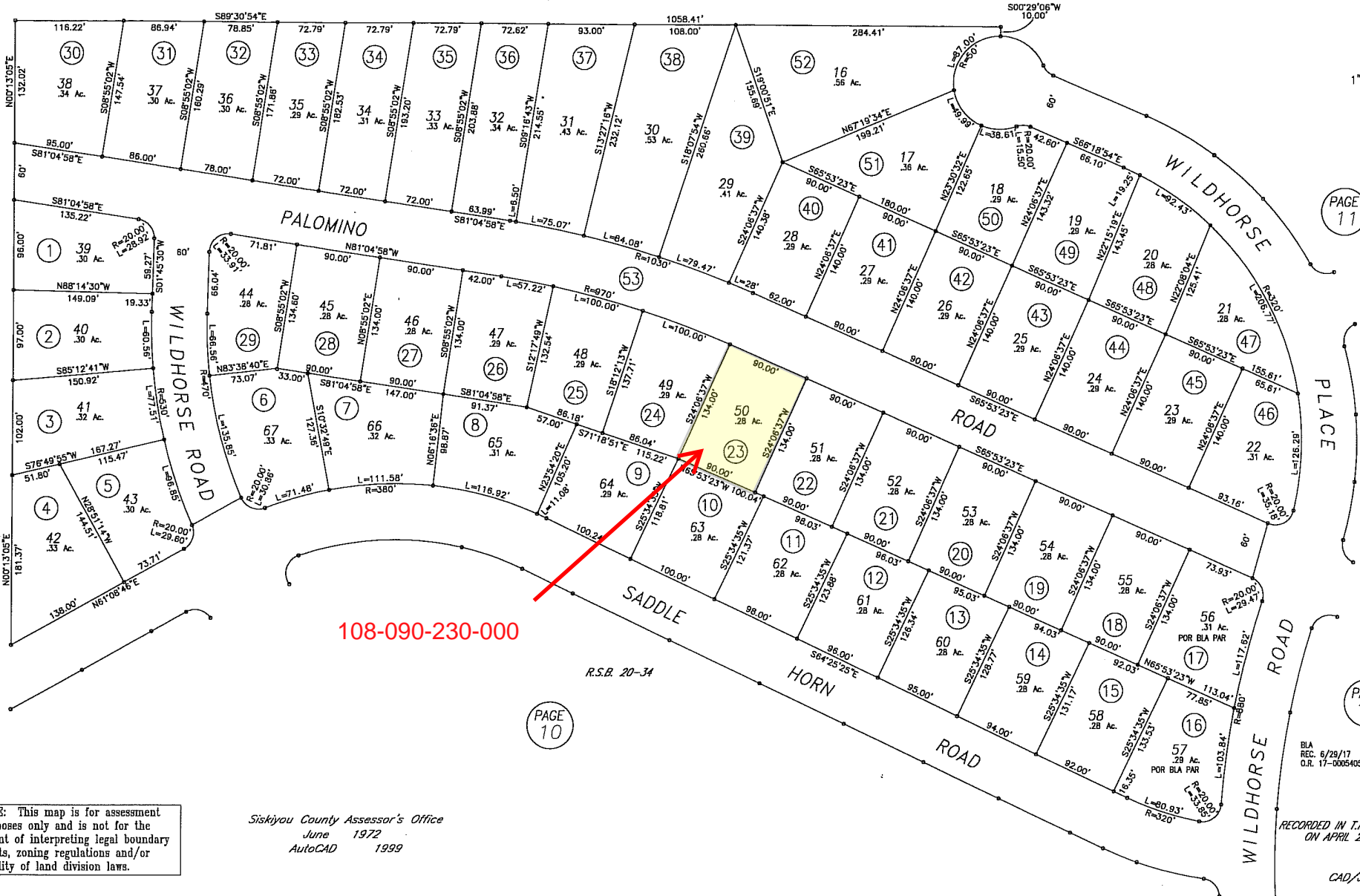
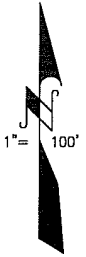


LAKE SHASTINA TRACT 1000-9-1



108-090-230-000

NOTE: This map is for assessment purposes only and is not for the intent of interpreting legal boundary rights, zoning regulations and/or legality of land division laws.

Siskiyou County Assessor's Office
 June 1972
 AutoCAD 1999

RECORDED IN T.M.B. 5 PAGE 107
 ON APRIL 27, 1972

CAD/LAC