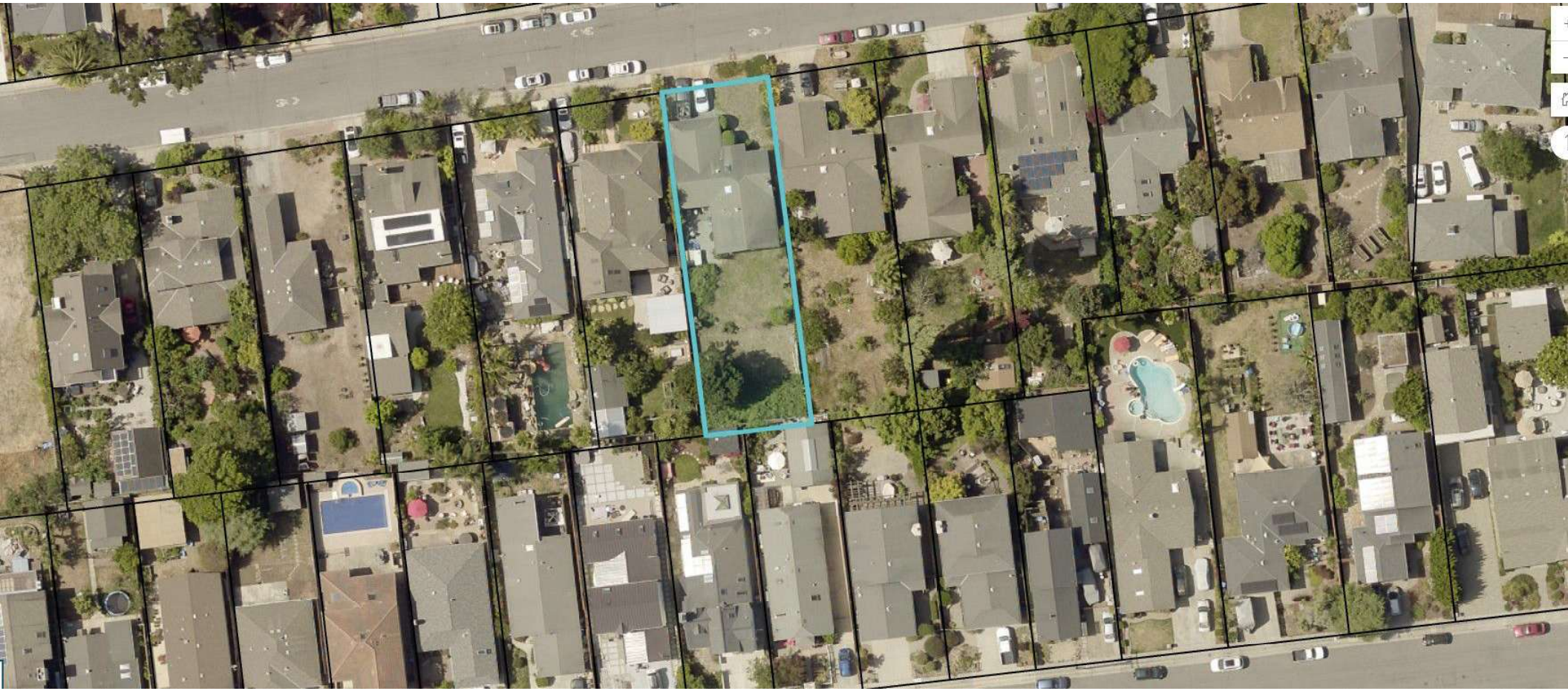


004-191-08

Real property situate in the City of Santa Cruz, County of Santa Cruz, State of California,
described as:

BEING Lot 11, in Block "C", as the same is
shown and designated on that certain map
entitled "Map of Recreation Park Tract",
filed for record in the office of the County
Recorder on May 25, 1907, in Map Book 13, Page
27, Santa Cruz County Records.



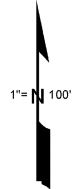
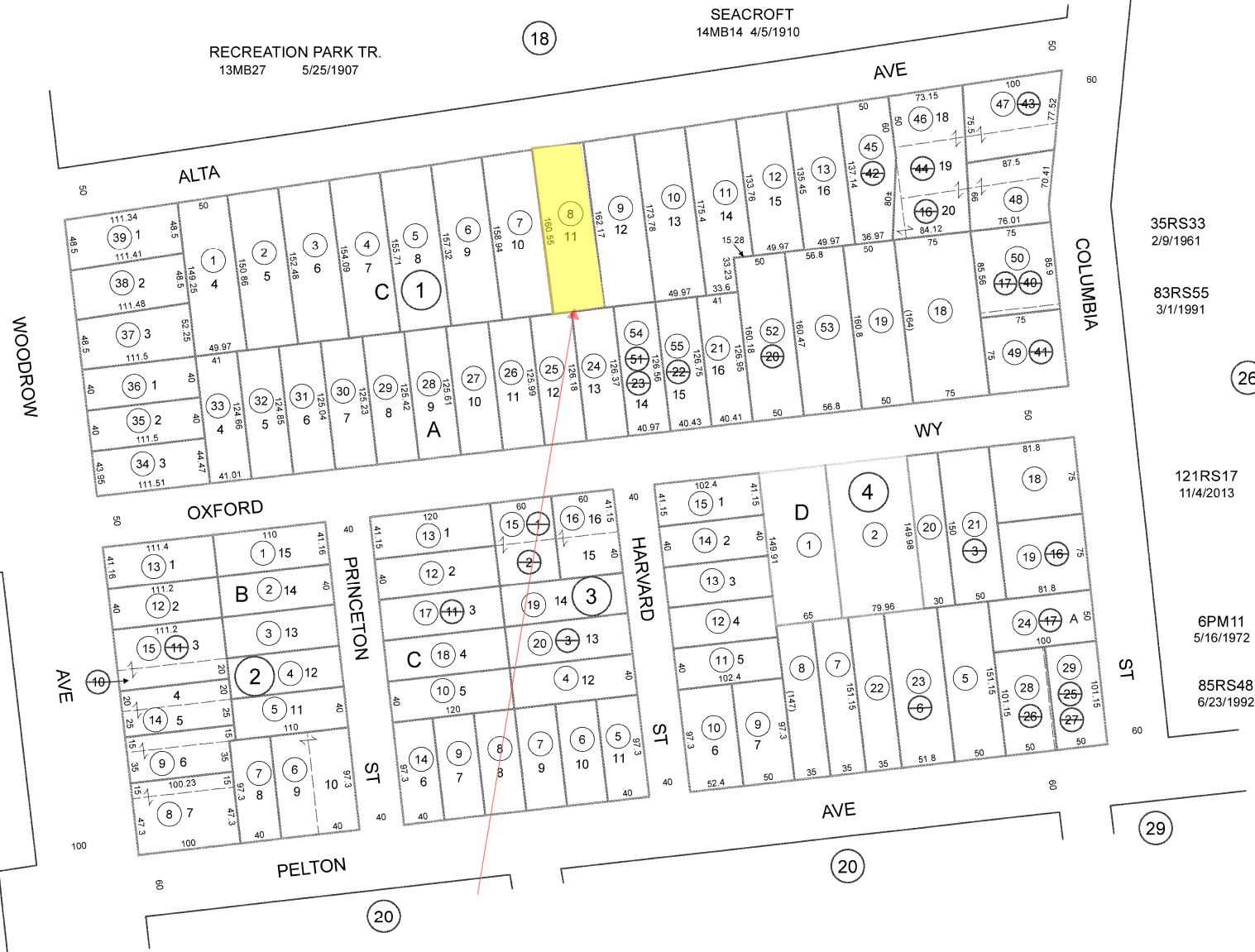
FOR TAX PURPOSES ONLY

THE ASSESSOR MAKES NO GUARANTEE AS TO MAP ACCURACY NOR ASSUMES ANY LIABILITY FOR OTHER USES. NOT TO BE REPRODUCED. ALL RIGHTS RESERVED.
© COPYRIGHT SANTA CRUZ COUNTY ASSESSOR 2001

CITY OF SANTA CRUZ

Tax Area Code
1-032

4-19



35RS33
2/9/1961

83RS55
3/1/1991

121RS17
11/4/2013

6PM11
5/16/1972

85RS48
6/23/1992

Electronically repositioned 4/26/01 KSA
Rev. Santa Cruz City Realignment 4/26/01 KSA
Rev. 5/13/13 mc (cor. D parcel config 4-01 & 02)
Rev. 12/3/13 CB (12/1/15/17)

Note - Assessor's Parcel & Block
Numbers are Shown in Circles.

Assessor's Map No. 4-19
City of Santa Cruz
County of Santa Cruz, Calif.