

036-142-27

Exhibit A

SITUATE IN THE CITY OF CAPITOLA, COUNTY OF SANTA CRUZ, STATE OF CALIFORNIA AND DESCRIBED AS FOLLOWS:

PARCEL ONE:

LOT 4, IN BLOCK "V", AS THE SAME IS SHOWN UPON THAT CERTAIN MAP ENTITLED, "CAPITOLA" FILED FOR RECORD IN THE OFFICE OF THE COUNTY RECORDER ON APRIL 25, 1888, IN MAP BOOK 10, PAGE 13, SANTA CRUZ COUNTY RECORDS.

PARCEL TWO:

A RIGHT OF WAY FOR INGRESS, EGRESS AND PUBLIC UTILITY PURPOSES OVER THAT PORTION OF PROSPECT AVENUE, AS SHOWN UPON THE FILED MAP HEREINABOVE REFERRED TO, LYING WESTERLY OF THE SOUTHERLY EXTENSION OF THE EASTERLY LINE OF SAID LOT 4.

APN: 036-142-27

Map

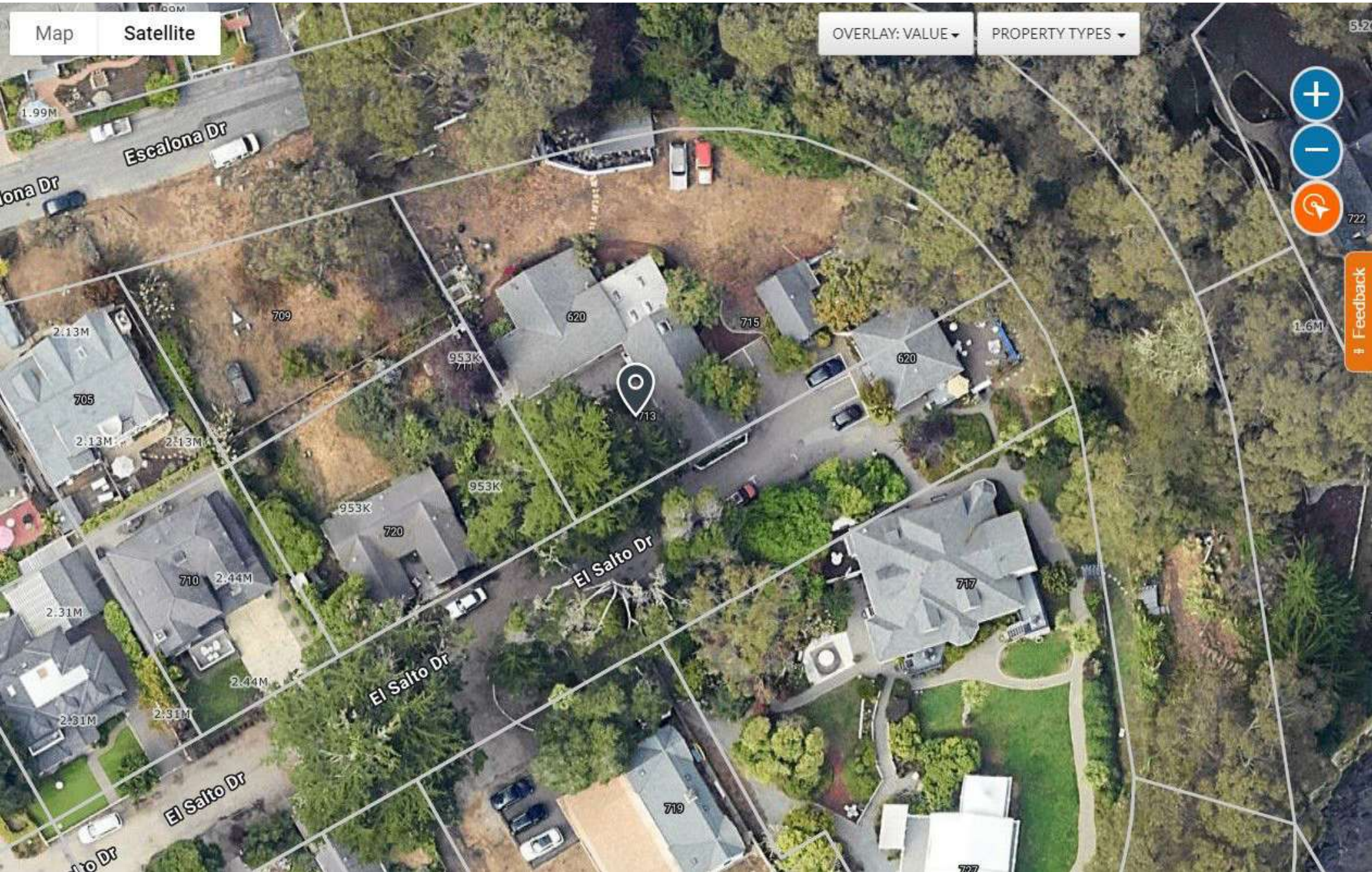
Satellite

OVERLAY: VALUE ▾

PROPERTY TYPES ▾



Feedback



FOR TAX PURPOSES ONLY

THE ASSESSOR MAKES NO GUARANTEE AS TO MAP ACCURACY NOR ASSUMES ANY LIABILITY FOR OTHER USES. NOT TO BE REPRODUCED. ALL RIGHTS RESERVED.
© COPYRIGHT SANTA CRUZ COUNTY ASSESSOR 1995

CITY OF CAPITOLA

Tax Area Code
3-108

36-14



- Electronically drawn 7/10/85 KSA
- Rev 12/17/86 GG (G3PM42, Sp 1-28 to 28)
- Rev 1/14/88 CB (CA Consolidation)
- Rev 4/29/88 GS (4756647, Cor 3-29)
- Rev 7/30/88 CB (8-0006080, LBA 2-29 & 30)
- Rev 2/10/89 CB (4635971, LBA 3-30 & 31)
- Rev 4/23/89 CB (4635971, LBA 3-30 & 31)
- Rev 4/23/89 CB (4635971, LBA 3-30 & 31)
- Rev 4/12/04 CB (3-0012209, LBA 3-32 & 33)
- Rev 10/13/04 CB (3-010257, LBA 3-34)
- Rev 10/13/04 CB (4-0965544, LBA 3-38 & 36)
- Rev 12/14/05 md (corr APN)
- Rev 10/13/17 JB (Cor tk nr & no)

Note - Assessor's Parcel & Block
Numbers Shown in Circles.

Assessor's Map No. 36-14
City of Capitola
County of Santa Cruz, Calif.