

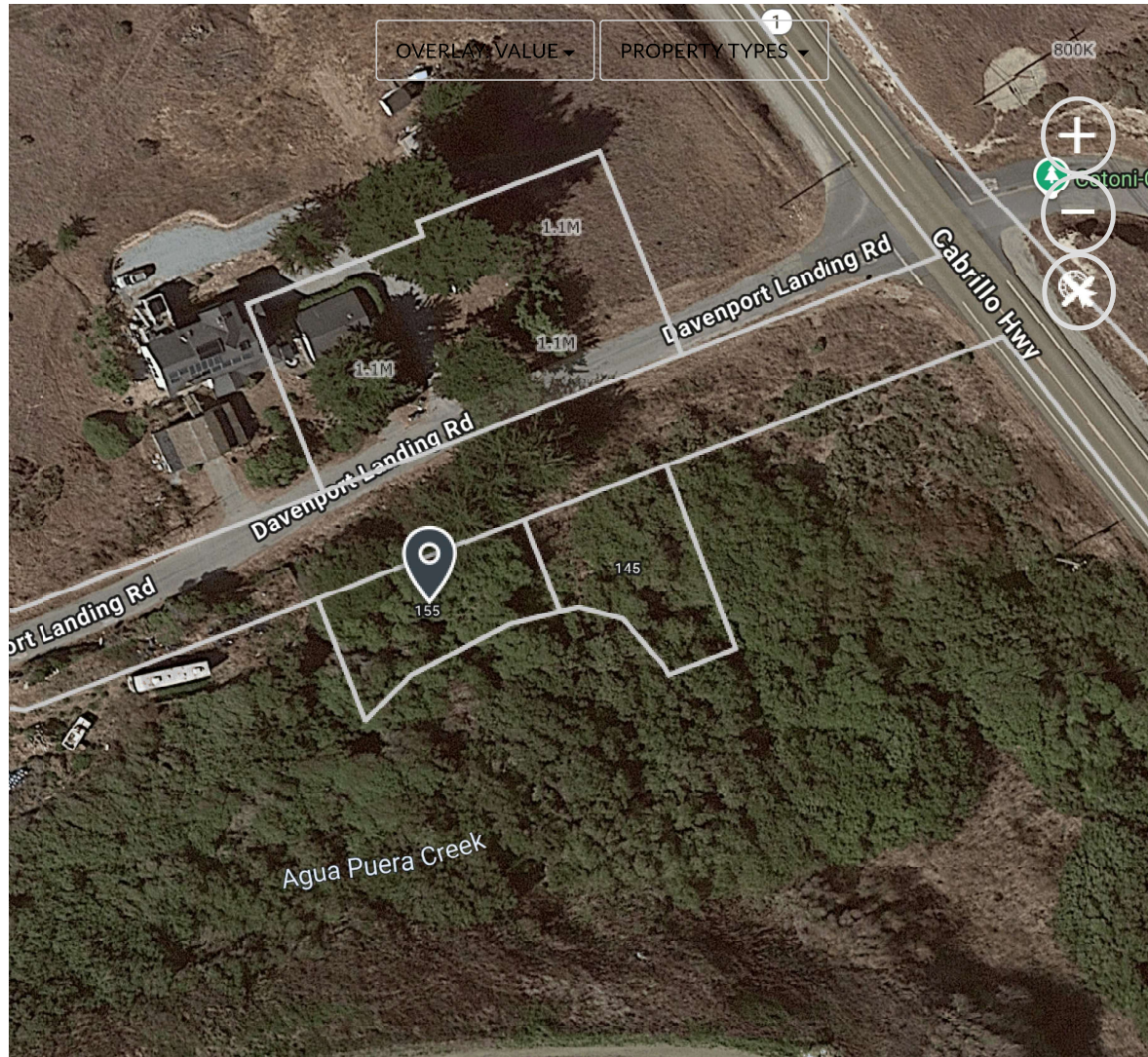
05805301

The land referred to herein is described as follows:

PARCEL ONE

SITUATE IN THE COUNTY OF SANTA CRUZ, STATE OF CALIFORNIA AND DESCRIBED AS FOLLOWS:

LOT MARKED "C" AS NUMBERED AND DESIGNATED ON THE MAP ENTITLED, "MAP NO. 1 OF TOWN LOTS LAID OUT BY G. P. LAIRD IN THE TOWN OF DAVENPORT, SANTA CRUZ COUNTY, CALIFORNIA," FILED APRIL 12, 1876 IN VOLUME 8 OF MAPS, PAGE 50 SANTA CRUZ COUNTY RECORDS.



VIEW REPORT



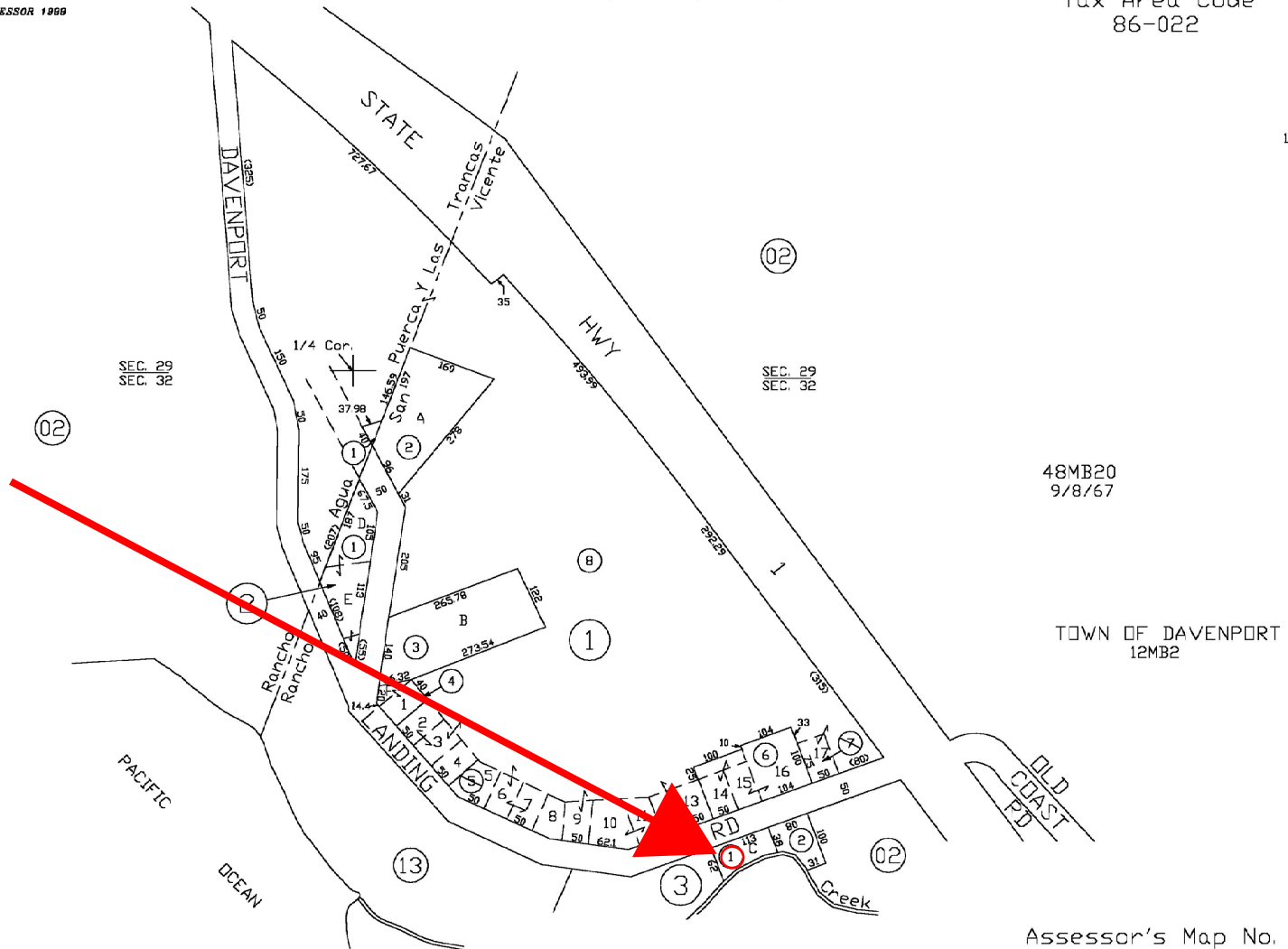
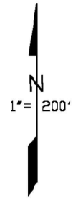
FOR TAX PURPOSES ONLY

THE ASSESSOR MAKES NO GUARANTEE AS TO MAP ACCURACY NOR ASSUMES ANY LIABILITY FOR OTHER USES. NOT TO BE REPRODUCED. ALL RIGHTS RESERVED.
© COPYRIGHT SANTA CRUZ COUNTY ASSESSOR 1999

RANCHO AGUA PUERACA Y LAS TRANCAS & SAN VICENTE
POR. SEC. 29 & 32, T.10S., R.3W., M.D.B. & M.

58-05

Tax Area Code
86-022



Note - Assessor's Parcel & Block Numbers Shown in Circles.

Assessor's Map No. 58-05
County of Santa Cruz, Calif.
Oct. 1999

Electronically redrawn 10/25/99 KSA
Rev. 10/17/00 CB GO 99-04
Rev. 06/25/01 CB GO 01-04
Rev. 6/25/01 NW Changed page refs.