

EXHIBIT "A"

075-122-14

the following described real property in the County of Santa Cruz, State of California:

Lot 51 in Block 9 of "Lompico, Tract C", as per map recorded June 25, 1925 in Map Book 18, at Page 64, according to the Official Records on file in the Office of the County Recorder of said Santa Cruz County, California.

Map

Satellite

OVERLAY: VALUE ▾

PROPERTY TYPES ▾



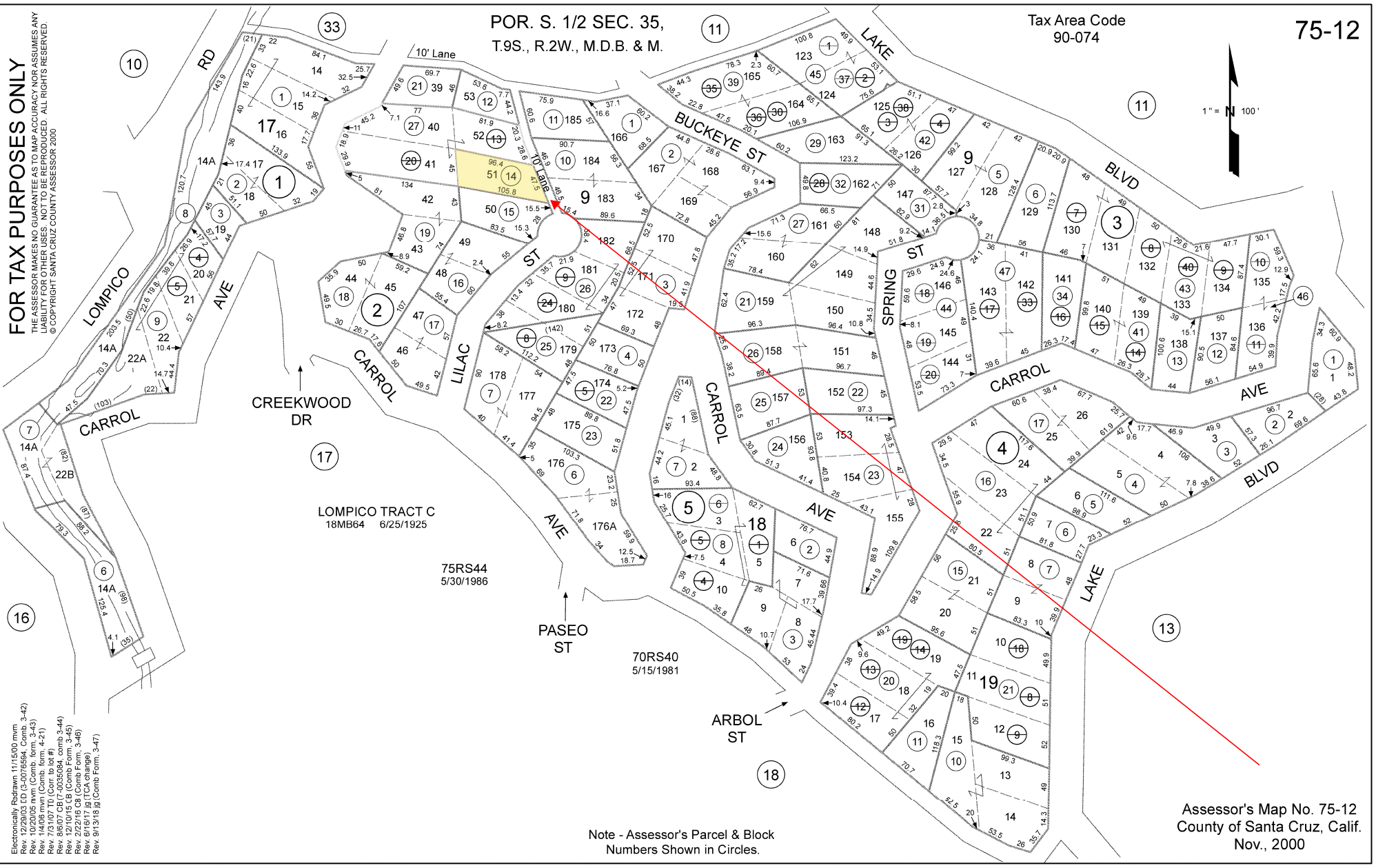
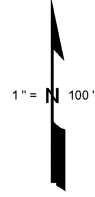
Feedback

FOR TAX PURPOSES ONLY
THE ASSESSOR MAKES NO GUARANTEE AS TO MAP ACCURACY NOR ASSUMES ANY LIABILITY FOR OTHER USES. NOT TO BE REPRODUCED. ALL RIGHTS RESERVED.
© COPYRIGHT SANTA CRUZ COUNTY ASSESSOR 2000

POR. S. 1/2 SEC. 35,
T.9S., R.2W., M.D.B. & M.

Tax Area Code
90-074

75-12



Electronically Redrawn 11/15/00 mm
CIP 12/15/00 (CIP) (Comb. Form, 3-42)
Rev. 10/29/00 (CIP) (Comb. Form, 3-43)
Rev. 10/29/00 (CIP) (Comb. Form, 4-21)
Rev. 7/31/07 TU (Corr. to lot #)
Rev. 8/6/07 CB (7-0335094, comb 3-44)
Rev. 12/1/05 CB (Comb. Form, 3-45)
Rev. 6/16/17 (TCA change, 3-46)
Rev. 9/13/18 (Comb. Form, 3-47)

LOMPICO TRACT C
18MB64 6/25/1925

75RS44
5/30/1986

70RS40
5/15/1981

Note - Assessor's Parcel & Block
Numbers Shown in Circles.

Assessor's Map No. 75-12
County of Santa Cruz, Calif.
Nov., 2000