

EXHIBIT "A"

082-171-14

the following described real property in the City of _____
County of Santa Cruz State of California
A.P.N. 082-171-14
LOTS 5 and 6, in Block 4, as ^{large description of real property} shown upon that certain map entitled,
"Riverdale Park", filed for record January 12, 1909, in Book 17 of
Maps at Page 2, Santa Cruz County Records.



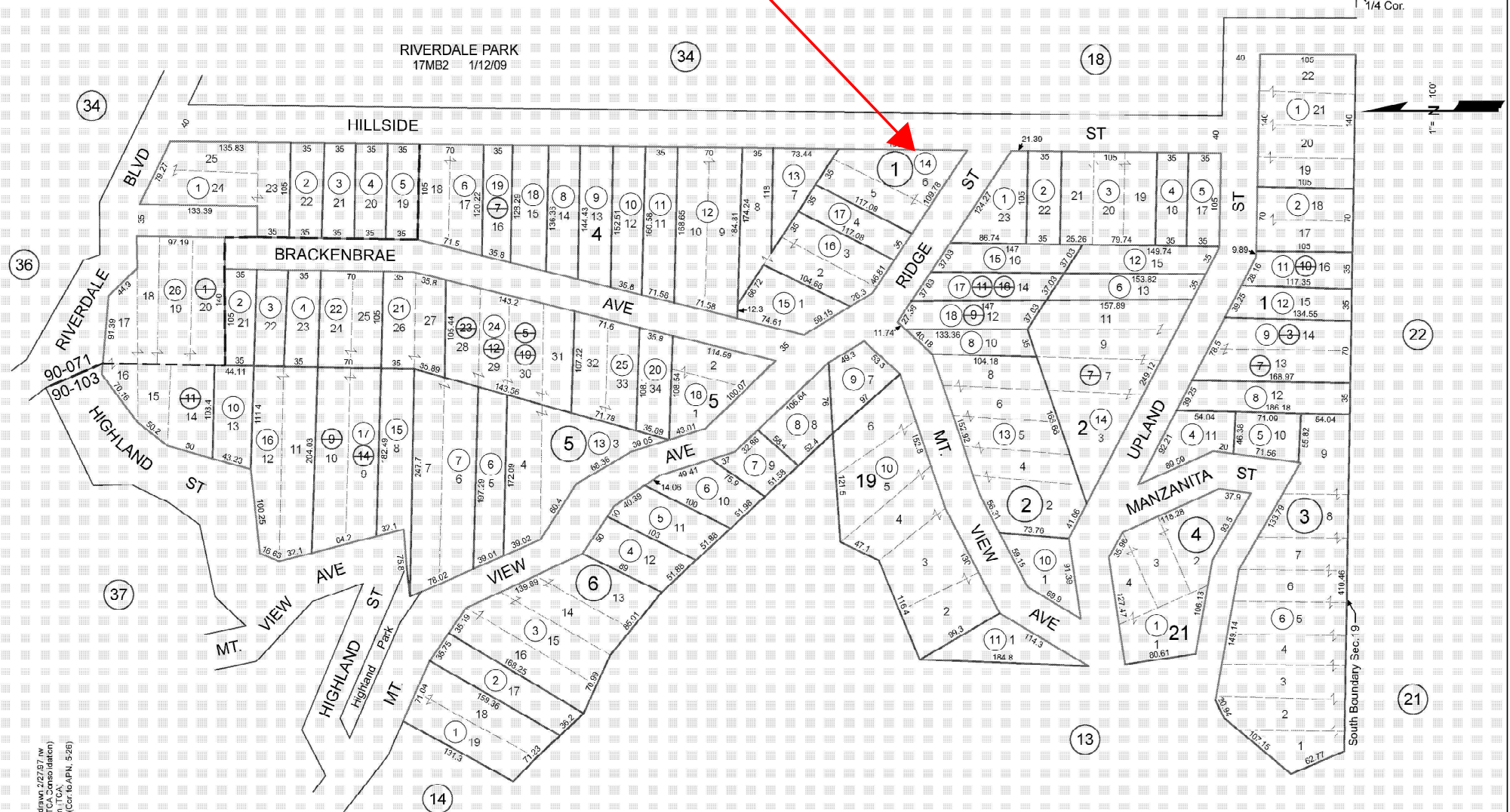
FOR TAX PURPOSES ONLY

POR. S.W. 1/4 SEC. 19, T.9S., R.2W., M.D.B. & M.

Tax Area Code
90-071 90-103

82-17

THE ASSESSOR MAKES NO GUARANTEE AS TO MAP ACCURACY NOR ASSUMES ANY LIABILITY FOR OTHER USES. NOT TO BE REPRODUCED. ALL RIGHTS RESERVED.
© COPYRIGHT SANTA CRUZ COUNTY ASSESSOR 1997



Electronically Redrawn 2/27/87 NW
Rev. 6/3/98 CB (TCA Consolidation)
Rev. 1/11/02 mm (TCA)
Rev. 1/20/08 trc (Cor. to APN, 526)

Note - Assessor's Parcel & Block
Numbers Shown in Circles.

Assessor's Map No. 82-17
County of Santa Cruz, Calif.
Feb., 1997