

EXHIBIT "A"

082-171-16

the following described real property in the City of _____
County of Santa Cruz State of California
APN 082-171-16
Legal description of real property:
LOTS 2, 3, and B, in Block 4, as the same are shown upon that certain
map entitled "Riverdale Park", filed for record January 12, 1909, in
Book 17 of Maps at Page 2, Santa Cruz County Records.



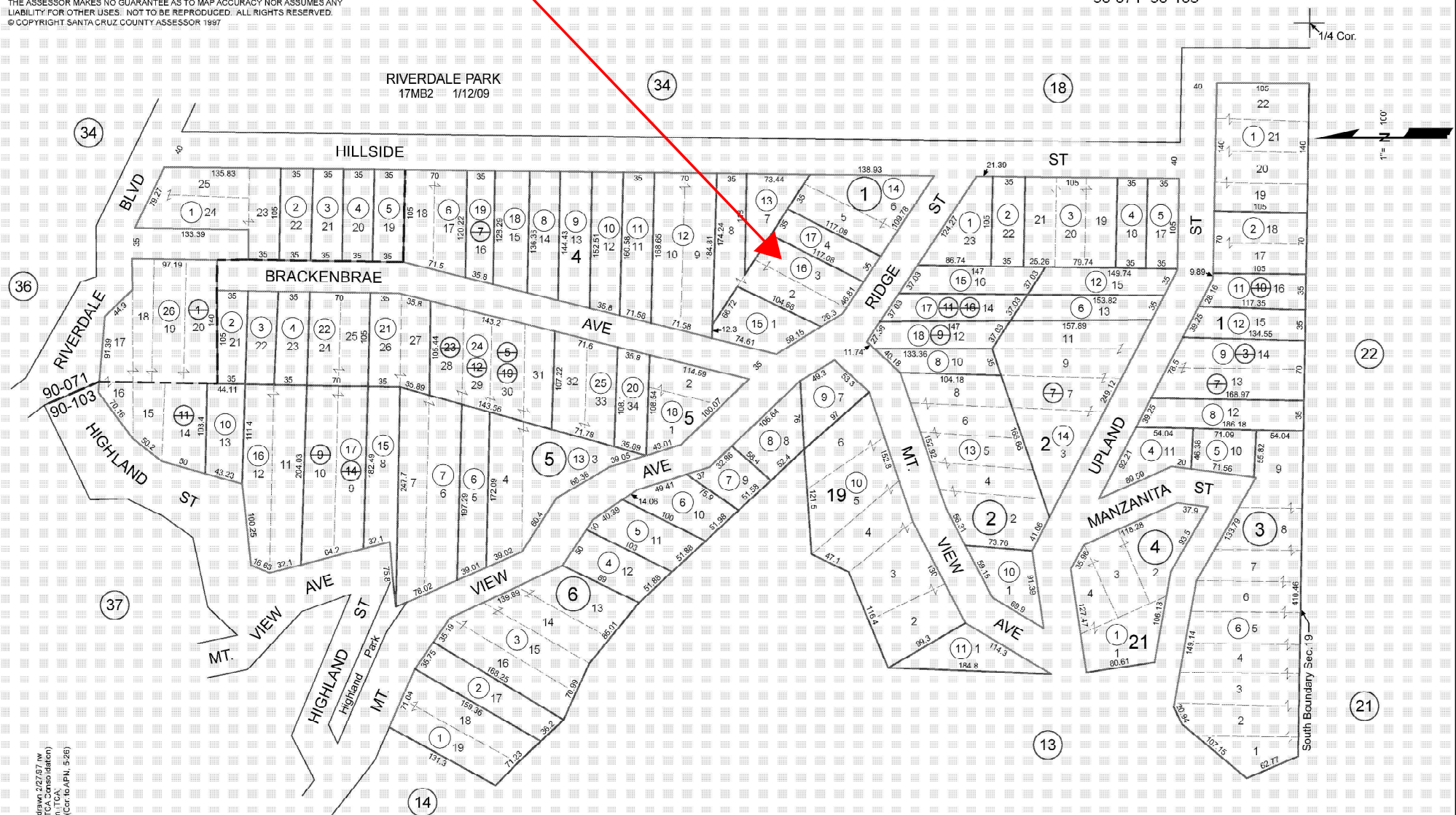
FOR TAX PURPOSES ONLY

THE ASSESSOR MAKES NO GUARANTEE AS TO MAP ACCURACY NOR ASSUMES ANY LIABILITY FOR OTHER USES. NOT TO BE REPRODUCED. ALL RIGHTS RESERVED.
© COPYRIGHT SANTA CRUZ COUNTY ASSESSOR 1997

FOR S.W. 1/4 SEC. 19, T.9S., R.2W., M.D.B. & M.

Tax Area Code
90-071 90-103

82-17



Electronically Redrawn 2/27/87 NW
Rev. 6/3/88 CB (TCA Consolidation)
Rev. 1/11/92 mm (TCA)
Rev. 2/20/88 trc (Cdr. 6/4/84, 5/26)

Note - Assessor's Parcel & Block Numbers Shown in Circles.

Assessor's Map No. 82-17
County of Santa Cruz, Calif.
Feb., 1997