

08718217

PARCEL 1:

BEING LOT NO. 71, AS SHOWN UPON THAT CERTAIN MAP ENTITLED, "AMENDED MAP OF SUBDIVISION NO. 1, SAN LORENZO WOODS, IN SECTION 1, T. 9 S. R. 3 W., M. D. B. & M., SANTA CRUZ COUNTY, CALIFORNIA", FILED FOR RECORD SEPTEMBER 1, 1934, IN VOLUME 25 OF MAPS AT PAGE 33, SANTA CRUZ COUNTY RECORDS.

PARCEL 2:

BEING LOT 72, AS SHOWN AND DESIGNATED UPON THAT CERTAIN MAP ENTITLED "AMENDED MAP OF, SUBDIVISION NO. 1 SAN LORENZO WOODS IN SECTION 1, T. 9 S., R. 3 W., M. D. B. & M.; SANTA CRUZ COUNTY, CALIF. SURVEYED JULY 1934 BY LLOYD BOWMAN, COUNTY SURVEYOR." FILED FOR RECORD IN THE OFFICE OF THE COUNTY RECORDER SEPTEMBER 1ST, 1934 IN MAP BOOK 25, PAGE 33, SANTA CRUZ COUNTY RECORDS.



FOR TAX PURPOSES ONLY

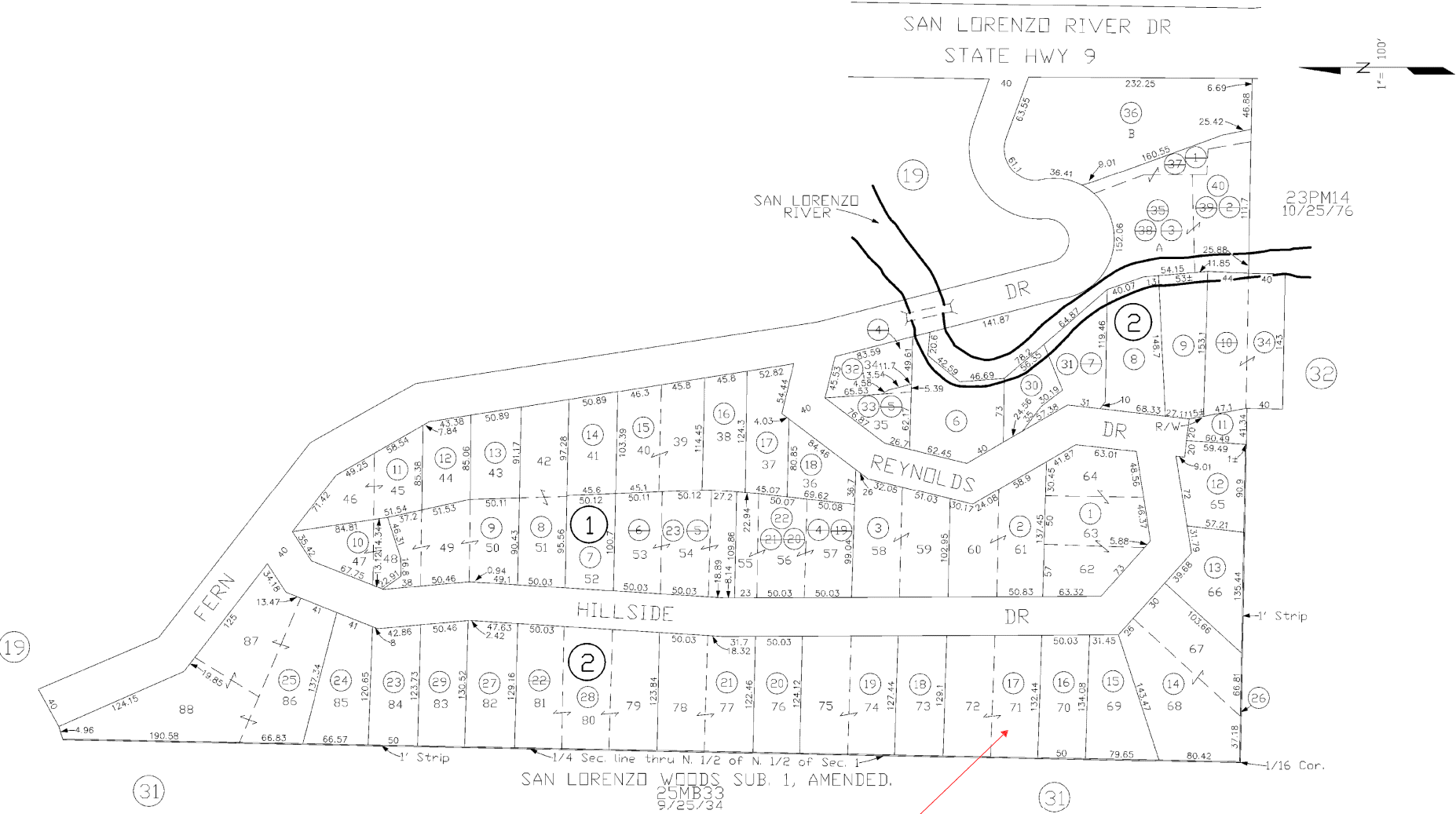
POR. N.E. 1/4 SEC. 1, T.9S., R.3W., M.D.B. & M.

Tax Area Code
90-103

87-18

THE ASSESSOR MAKES NO GUARANTEE AS TO MAP ACCURACY NOR ASSUMES ANY LIABILITY FOR OTHER USES. NOT TO BE REPRODUCED. ALL RIGHTS RESERVED.

© COPYRIGHT SANTA CRUZ COUNTY ASSESSOR 2000



Electronically drawn 2/29/00 mvn
Rev 9/8/03 CB (Cor. to st. name)

Note - Assessor's Parcel & Block
Numbers Shown in Circles.

SAN LORENZO WOODS SUB. 1, AMENDED.

25MB33
9/25/34

Assessor's Map No. 87-18
County of Santa Cruz, Calif.
Feb., 2000