

08721101

EXHIBIT A

The land referred to is situated in the unincorporated area of the County of Santa Cruz, State of California, and is described as follows:

Lots 7 and 8, Block 1, as the same are shown and designated on that certain map entitled, "Tract No. 29, Ramona Woods", filed for record on July 27, 1939, in Map Book 26, Page 29, Santa Cruz County Records.

APN: 087-211-01



FOR TAX PURPOSES ONLY

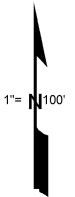
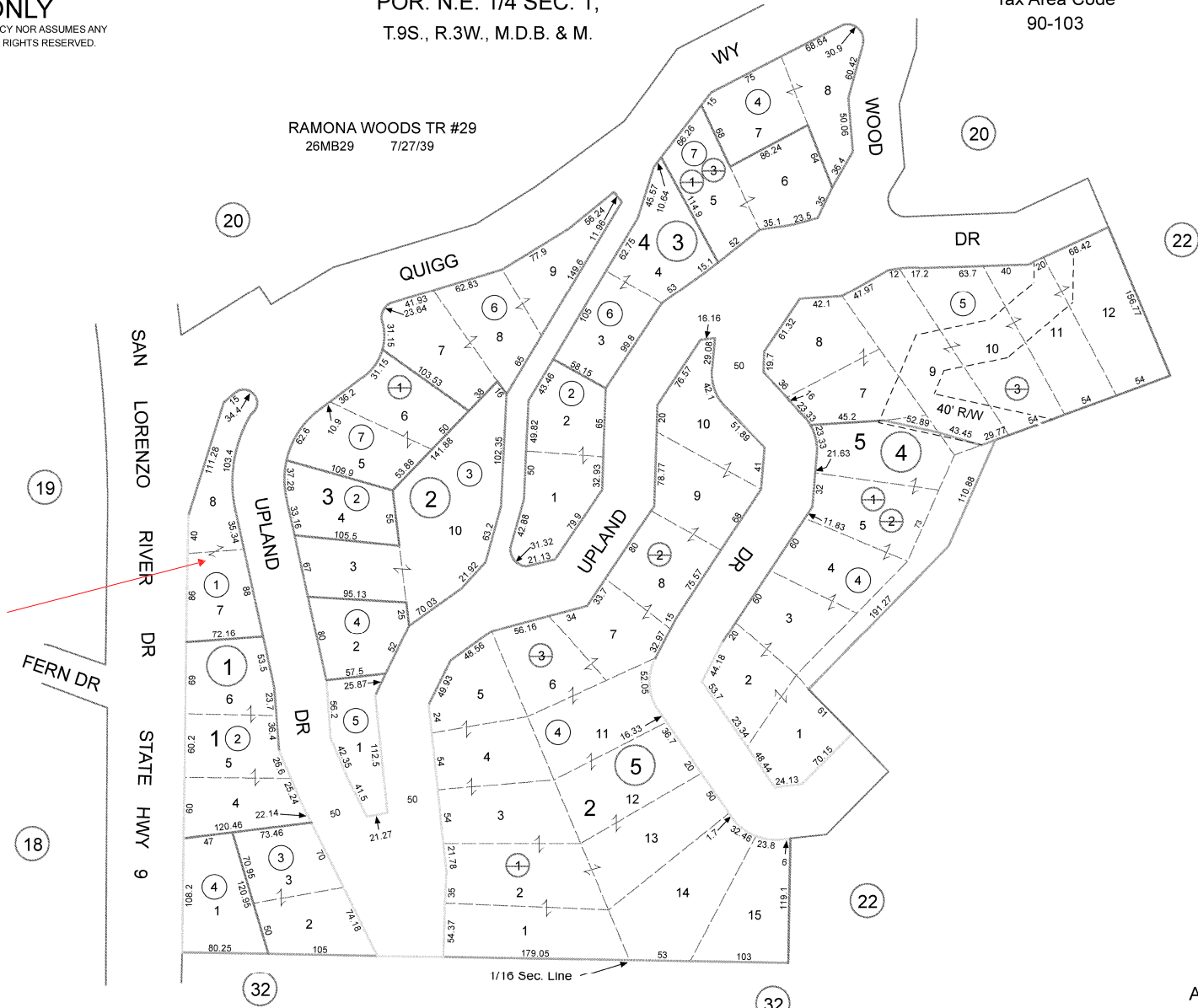
THE ASSESSOR MAKES NO GUARANTEE AS TO MAP ACCURACY NOR ASSUMES ANY LIABILITY FOR OTHER USES. NOT TO BE REPRODUCED. ALL RIGHTS RESERVED.
© COPYRIGHT SANTA CRUZ COUNTY ASSESSOR 2000

POR. N.E. 1/4 SEC. 1,
T.9S., R.3W., M.D.B. & M.

Tax Area Code
90-103

87-21

RAMONA WOODS TR #29
26MB29 7/27/39



Note - Assessor's Parcel & Block
Numbers Shown in Circles.

Assessor's Map No. 87-21
County of Santa Cruz, Calif.
March, 2000

Electronically drawn 3/2/00 mmm
Rev 9/9/03 CB (Cor to st. name)
Rev 8/26/07 CB (7-0088000 & 01, LBA 4-04 & 05)