

EXHIBIT "A"

Lots 19 and 20, Block 46, as shown upon that certain map entitled  
HAPPYLAND TRACT NO. 7, Santa Cruz County, California, filed for  
record October 4, 1911 in book 19 of Maps, page 4.

together with an irrevocable easement for ingress and egress to and  
from said parcel over the roadways delineated on the recorded map  
of said subdivision, subject to a reservation

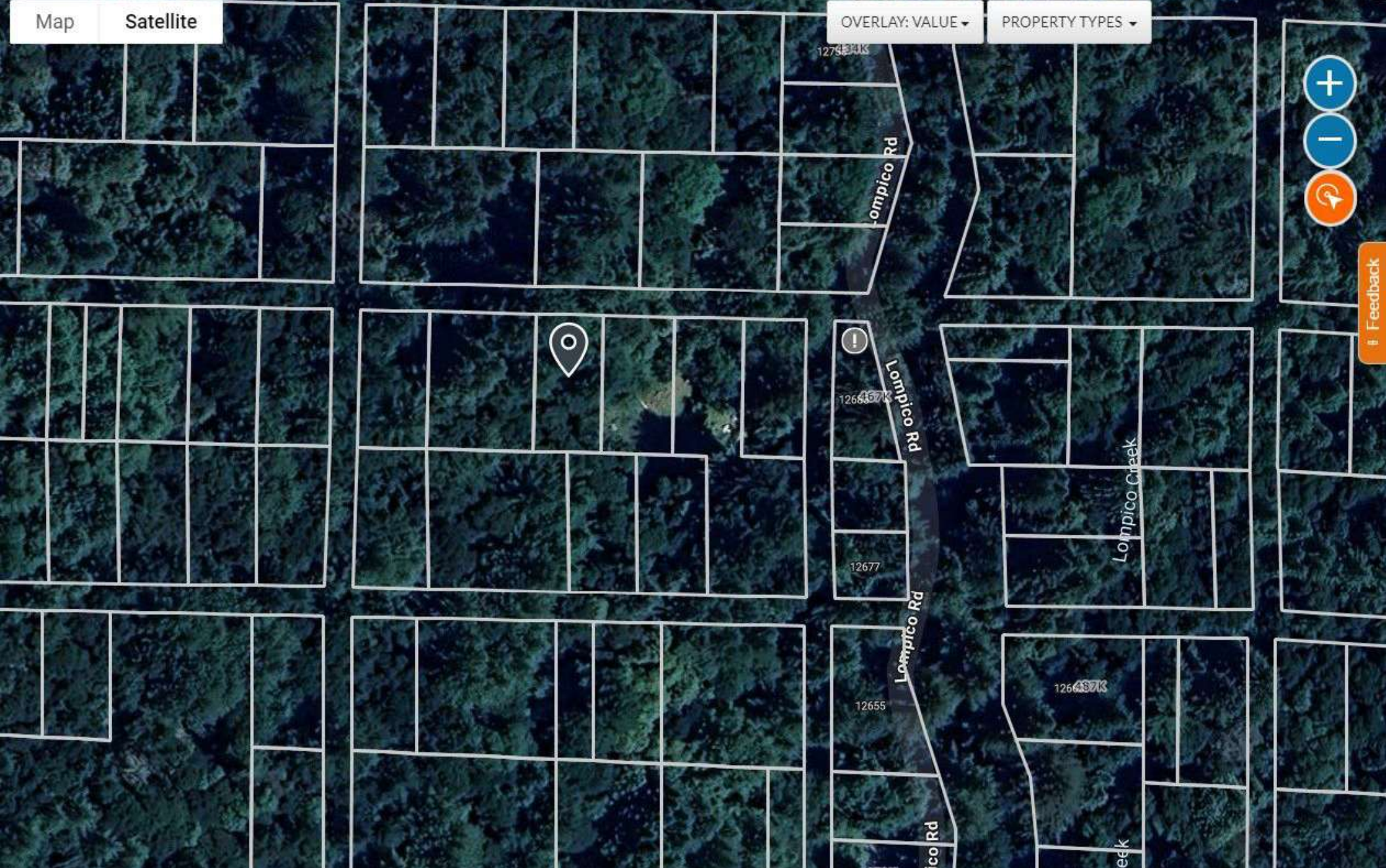
In Favor Of: David L. Springmann, et al  
For: All Oil, Gas and Other Hydrocarbon Substances  
Recorded: July 30, 1964 in Book 1634 page 345 Official  
Records.

Map

Satellite

OVERLAY: VALUE ▾

PROPERTY TYPES ▾



Feedback

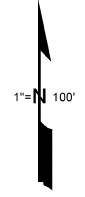
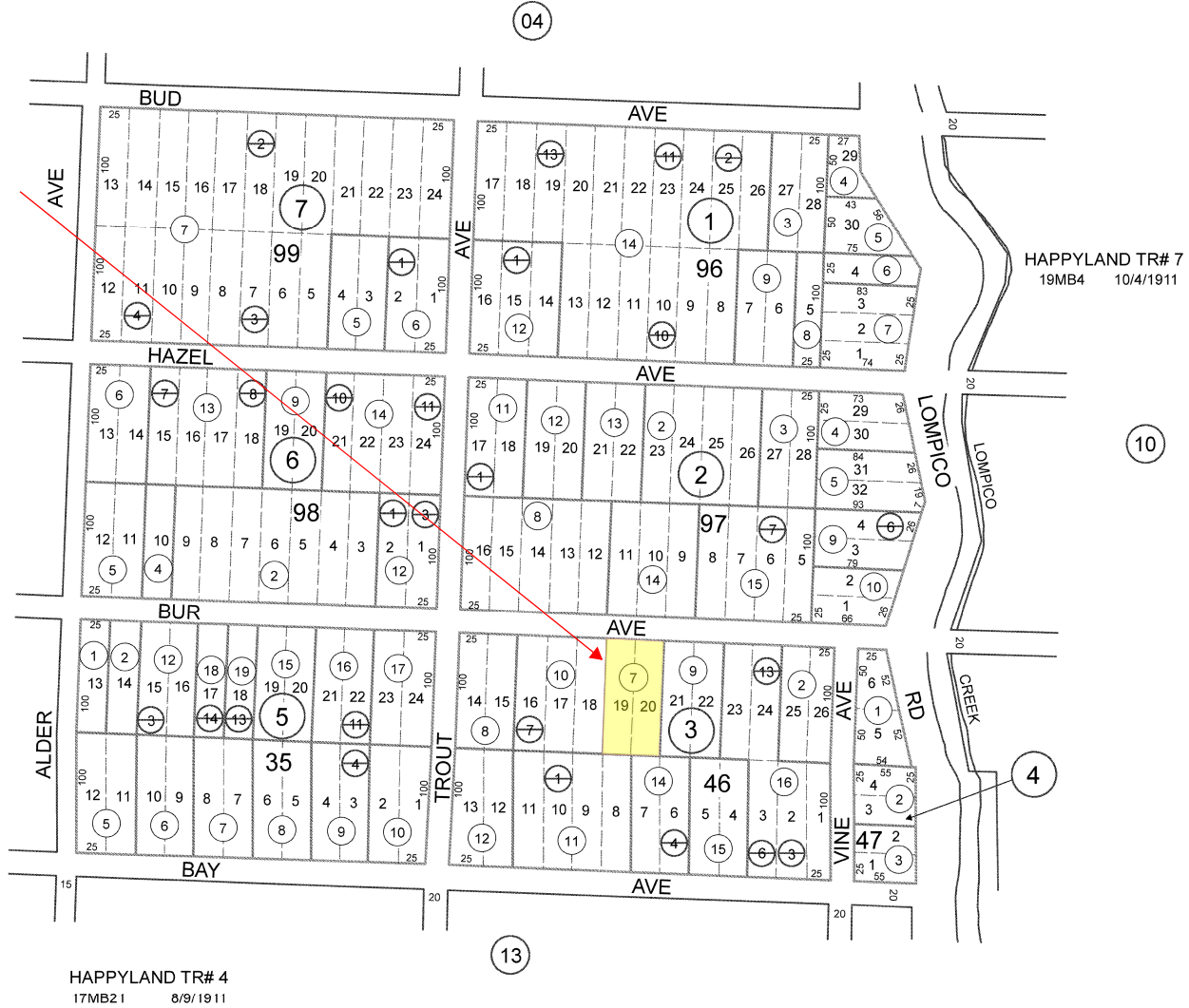
# FOR TAX PURPOSES ONLY

THE ASSESSOR MAKES NO GUARANTEE AS TO MAP ACCURACY NOR ASSUMES ANY LIABILITY FOR OTHER USES. NOT TO BE REPRODUCED. ALL RIGHTS RESERVED.  
© COPYRIGHT SANTA CRUZ COUNTY ASSESSOR 1999

POR. S.W. 1/4, SEC. 26, T.9S., R.2W., M.D.B. & M.

Tax Area Code  
90-108

92-09



Electronically redrawn 5/28/99 KSA  
Rev 10/13/16 CB (Comb Form, 1-14)  
Rev 10/13/16 CB (Comb Form, 3-16)  
Rev 10/13/16 CB (Comb Form, 6-13 & 14)  
Rev 10/13/16 CB (Comb Form, 7-07)

Note - Assessor's Parcel & Block  
Numbers Shown in Circles.

Assessor's Map No. 92-09  
County of Santa Cruz, Calif.  
May 1999