

EXHIBIT "A"

LOTS 15 AND 16, BLOCK 128, AS SHOWN UPON THAT CERTAIN MAP ENTITLED, HAPPYLAND, TRACT NO. 10, SANTA CRUZ COUNTY, CALIFORNIA, FILED FOR RECORD OCTOBER 4, 1911, IN BOOK 19 OF MAPS, PAGE 7, TOGETHER WITH AN IRREVOCABLE EASEMENT FOR INGRESS AND EGRESS TO AND FROM SAID PARCEL OVER THE ROADWAYS DELINEATED TO THE RECORDED MAP OF SAID SUBDIVISION.

A.P.N. 092-172-08



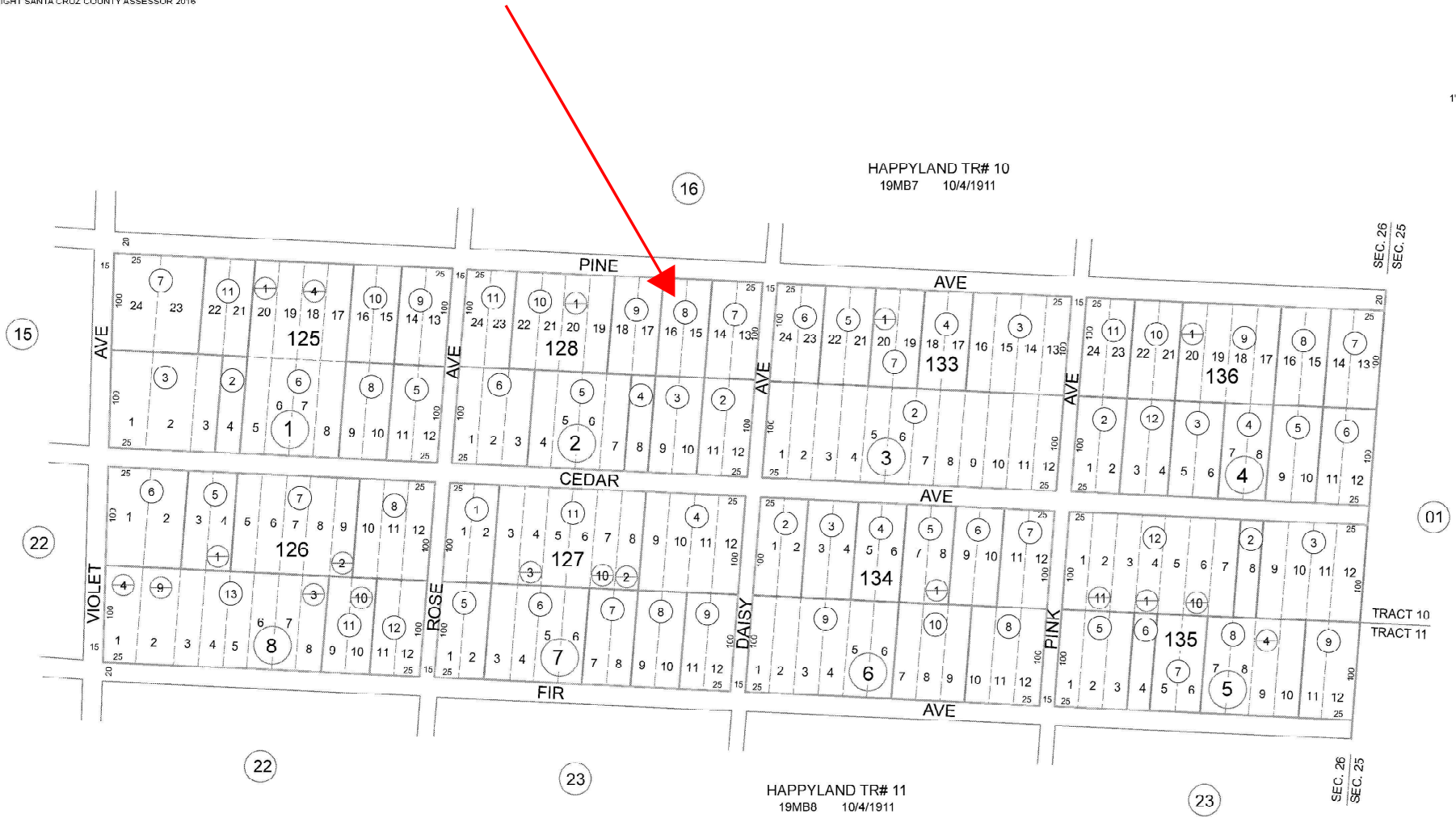
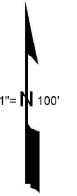
FOR TAX PURPOSES ONLY

THE ASSESSOR MAKES NO GUARANTEE AS TO MAP ACCURACY NOR ASSUMES ANY LIABILITY FOR OTHER USES. NOT TO BE REPRODUCED. ALL RIGHTS RESERVED.
© COPYRIGHT SANTA CRUZ COUNTY ASSESSOR 2016

POR. S.E. 1/4, SEC. 26, T.9S., R.2W., M.D.B. & M.

Tax Area Code
90-108

92-17



Electronically redrawn 10/17/16 by
Rox 10/17/16 j (Contd Form: 7-11)

Note - Assessor's Parcel & Block
Numbers Shown in Circles.

Assessor's Map No. 92-17
County of Santa Cruz, Calif.
Oct 2016