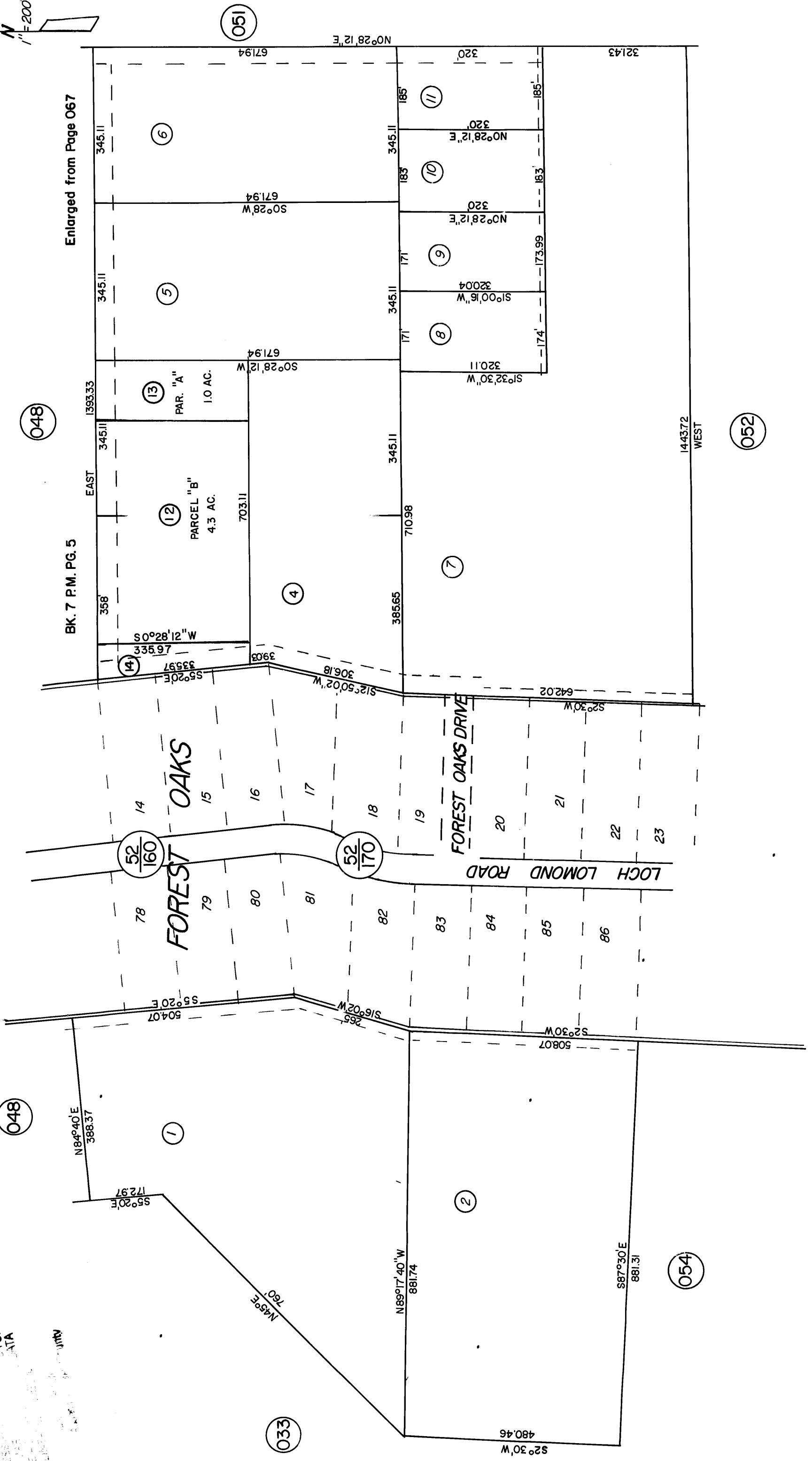


PORTION of Sec. 25 T12N R8W

T. R. A.
60-009

11-050

FOR
ONLY
FOR
DATA
DELIVERED TO THE
COUNTY



048

048

051

033

054

052

Enlarged from Page 067

BK. 7 P.M. PG. 5

EAST

FOREST OAKS

FOREST OAKS DRIVE

LOCH LOMOND ROAD

PARCEL "A"
1.0 AC.

PARCEL "B"
4.3 AC.

S0°28'12"W
765.53'

S35.97'

S0°28'12"W
671.94'

S0°28'W
671.94'

N0°28'12"E
671.94'

S1°32'30"W
320.11'

S1°00'16"W
320.04'

N0°28'12"E
320'

N0°28'12"E
320'

S21.43'

1443.72
WEST

6

5

13

12

14

4

7

18

19

20

21

22

23

52/160

52/170

78

79

80

81

82

83

84

85

86

N84°40'E
388.37'

S5°20'E
172.97'

S5°20'E
504.07'

S16°02'W
265'

S2°30'W
508.07'

N45°E
760'

N89°17'40"W
881.74'

S87°30'E
881.31'

S2°30'W
480.46'

S0°28'12"W
703.11'

S0°28'12"W
703.11'

S0°28'12"W
703.11'

S0°28'12"W
703.11'

S0°28'12"W
703.11'

S0°28'12"W
703.11'

S0°28'12"W
703.11'

S0°28'12"W
703.11'

S0°28'12"W
703.11'

S0°28'12"W
703.11'

S0°28'12"W
703.11'

S0°28'12"W
703.11'

S0°28'12"W
703.11'

S0°28'12"W
703.11'

S0°28'12"W
703.11'

S0°28'12"W
703.11'