

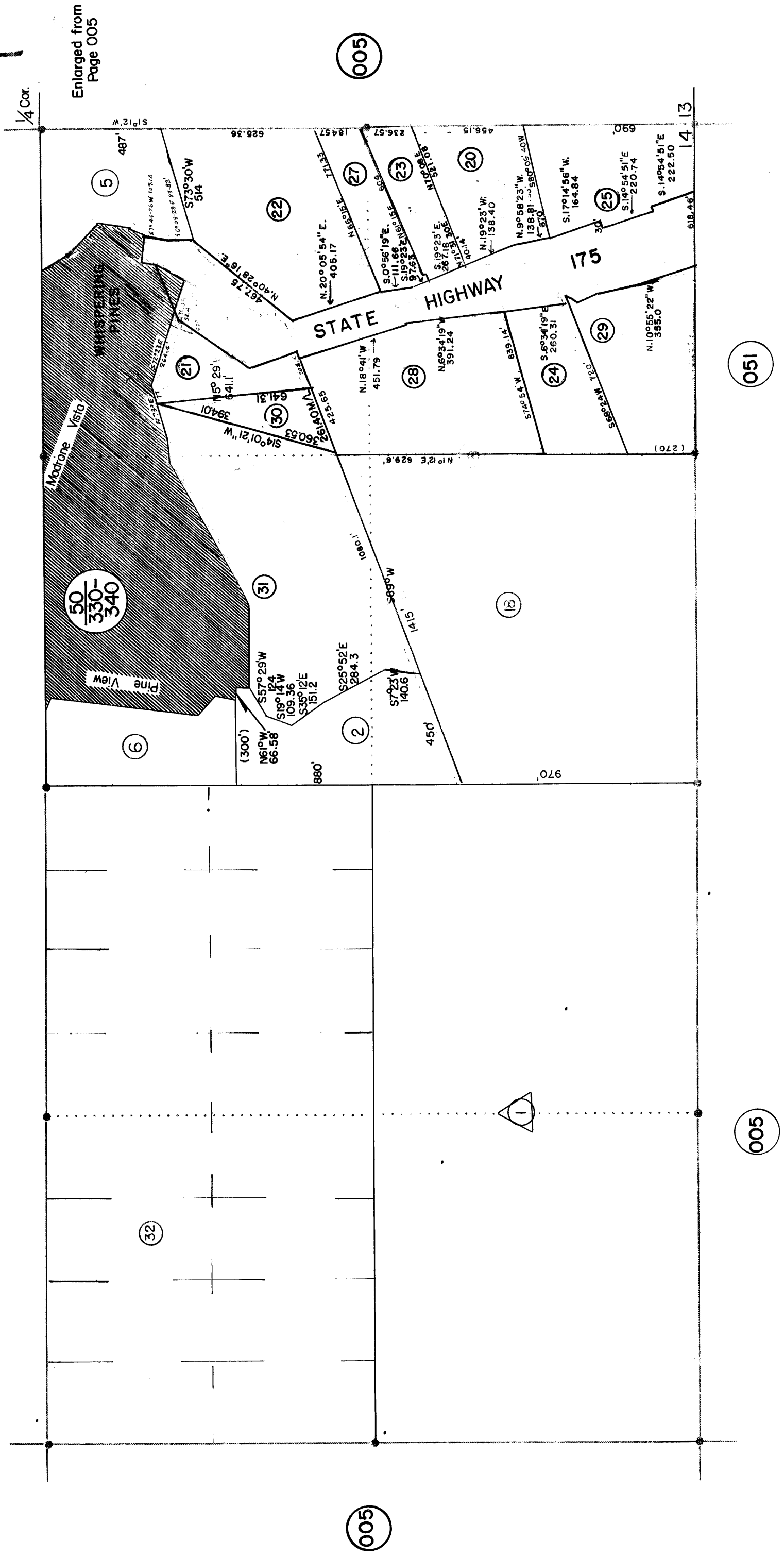
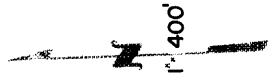
THIS MAP WAS PREPARED FOR  
 ASSIGNMENT PURPOSES ONLY  
 NO WARRANTY IS ASSUMED FOR  
 THE ACCURACY OF THE DATA  
 DELINEATED HEREIN.

DAN L. IRWIN  
 Assessor, Lake County

Por. Sec. 14 T 11 N R 8 W

T.R.A.  
 62-016

13-039



50  
 330-  
 340

WHISPERING  
 PINES

Modane Vista

Pine View

STATE HIGHWAY  
 175

6

5

2

32

30

21

31

22

18

28

23

005

005

005

051

005