

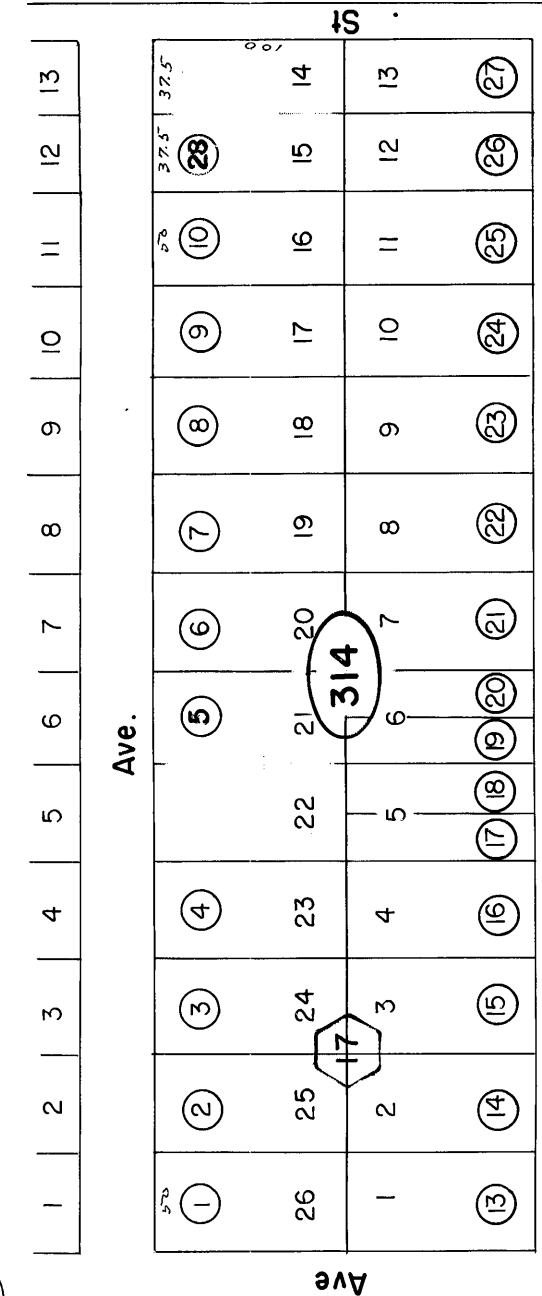
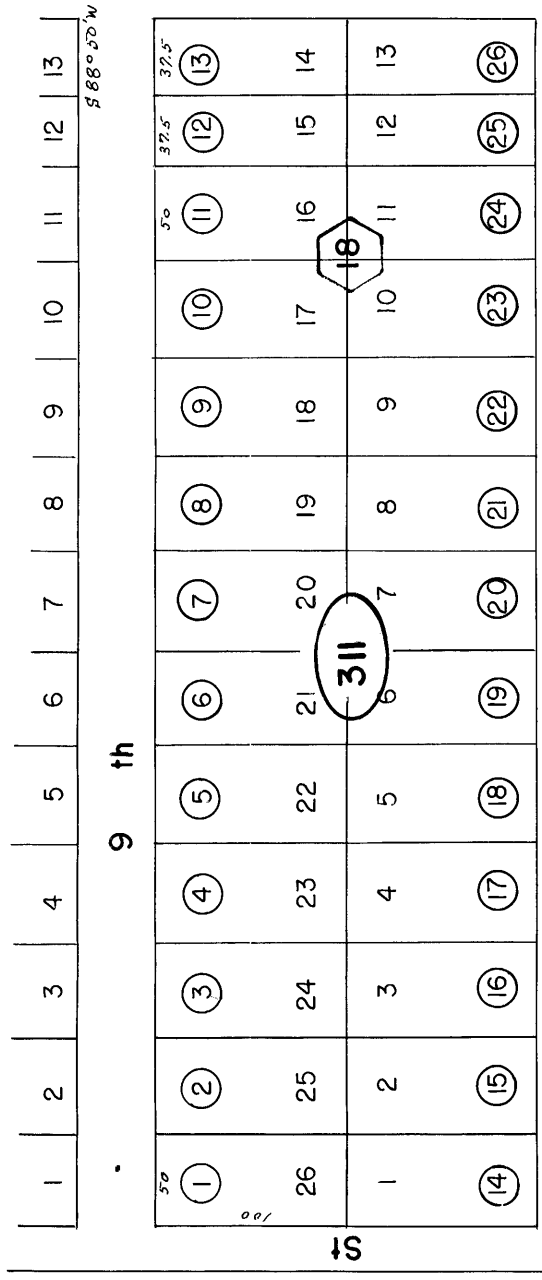
THIS PLAN WAS PREPARED FOR THE ASSASSMENT PURPOSES ONLY. NO LIABILITY IS ASSUMED FOR THE ACCURACY OF THE DATA DELINEATED HEREON.

DAN L. RWIN
Assessor, Lake County

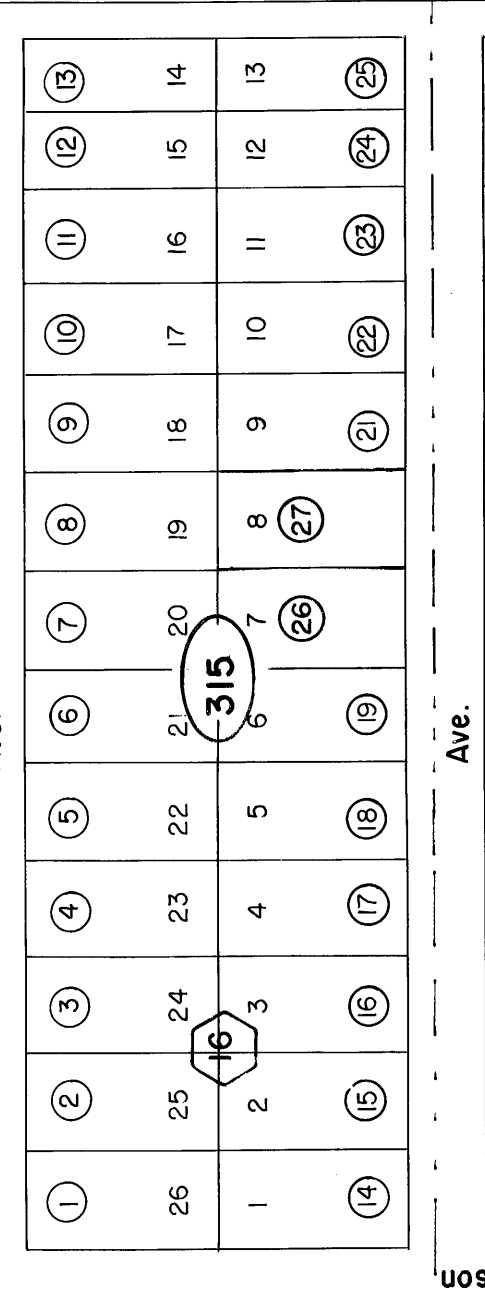
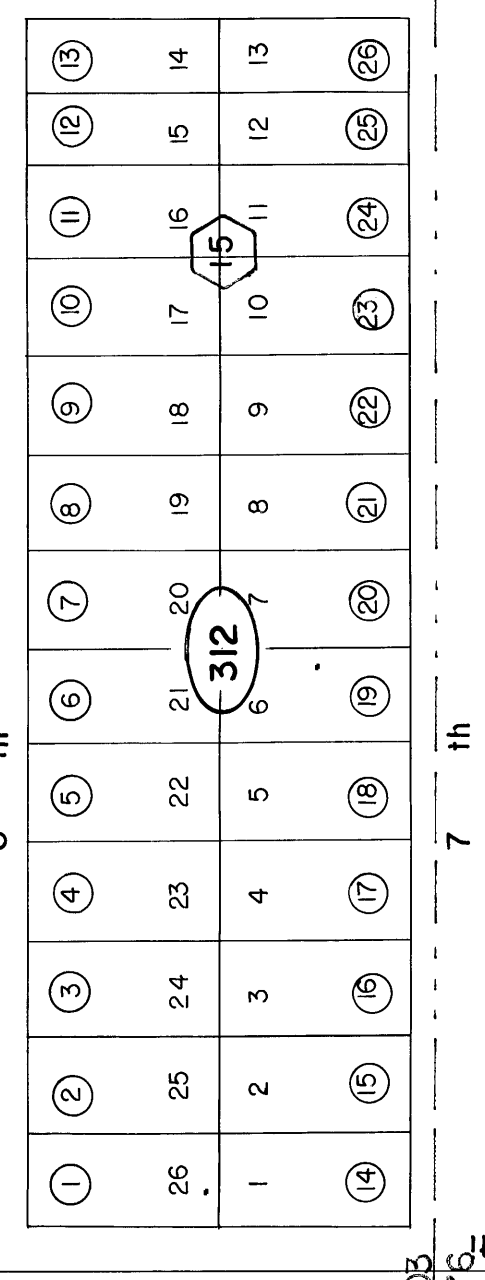
42-310
T.R.A.
2-003
2-076

CLEAR LAKE HIGHLANDS TRACT 2

300



350

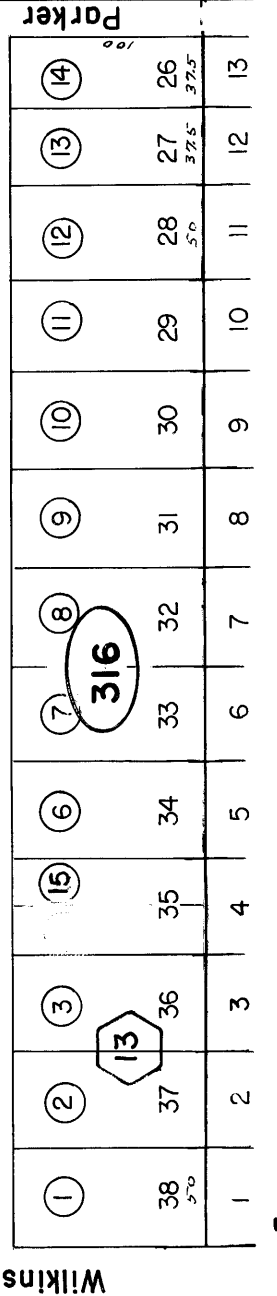
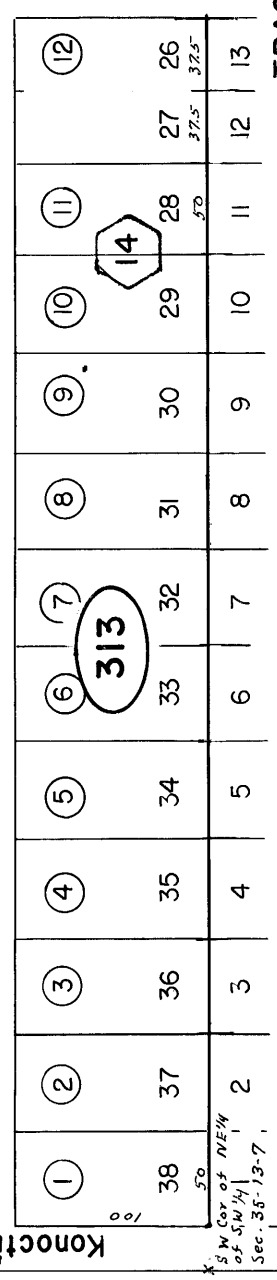


TRACT

2-003
2-076

2-003
2-076

Konochi



Wilkinson

Ave.

Parker

TRACT 5

360

SW Cor. of NE 1/4
of SW 1/4
Sec. 35-13-7

SW Cor. of NE 1/4
of SW 1/4
Sec. 35-13-7