

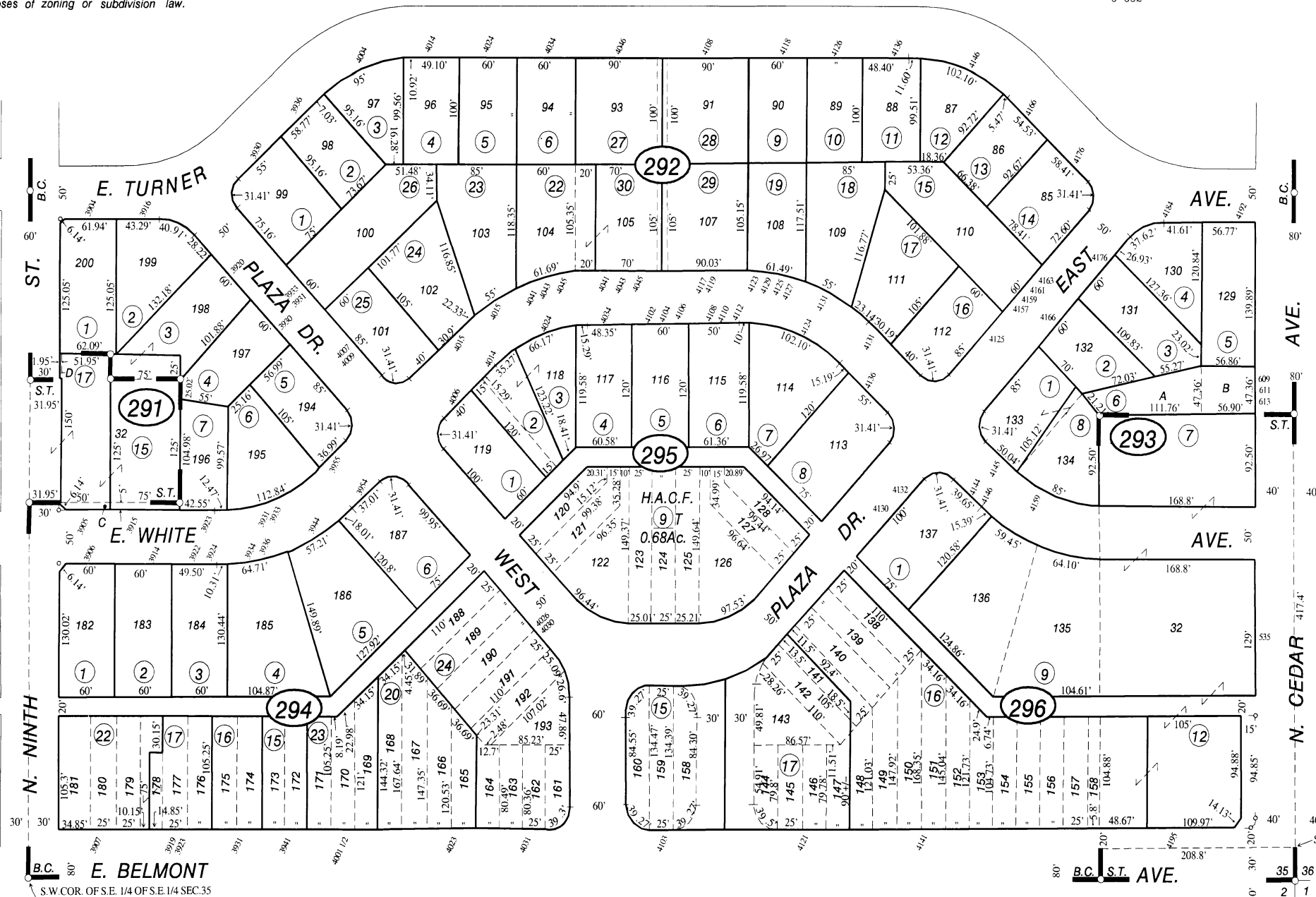
SUBDIVIDED LAND IN POR. SEC. 35, T. 13 S., R. 20 E., M.D.B. & M.

Tax Rate Area

454-29

5-912  
5-917  
5-332

--- NOTE ---  
This map is for Assessment purposes only.  
It is not to be construed as portraying  
legal ownership or divisions of land for  
purposes of zoning or subdivision law.



Belmont Center - Plat Bk. 13, Pg. 11  
Salinger Tract - Plat Bk. 2, Pg. 13

Bk. 460

Assessor's Map Bk. 454 - Pg. 29  
County of Fresno, Calif.

NOTE - Assessor's Block Numbers Shown in Ellipses.  
Assessor's Parcel Numbers Shown in Circles.