

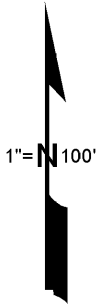
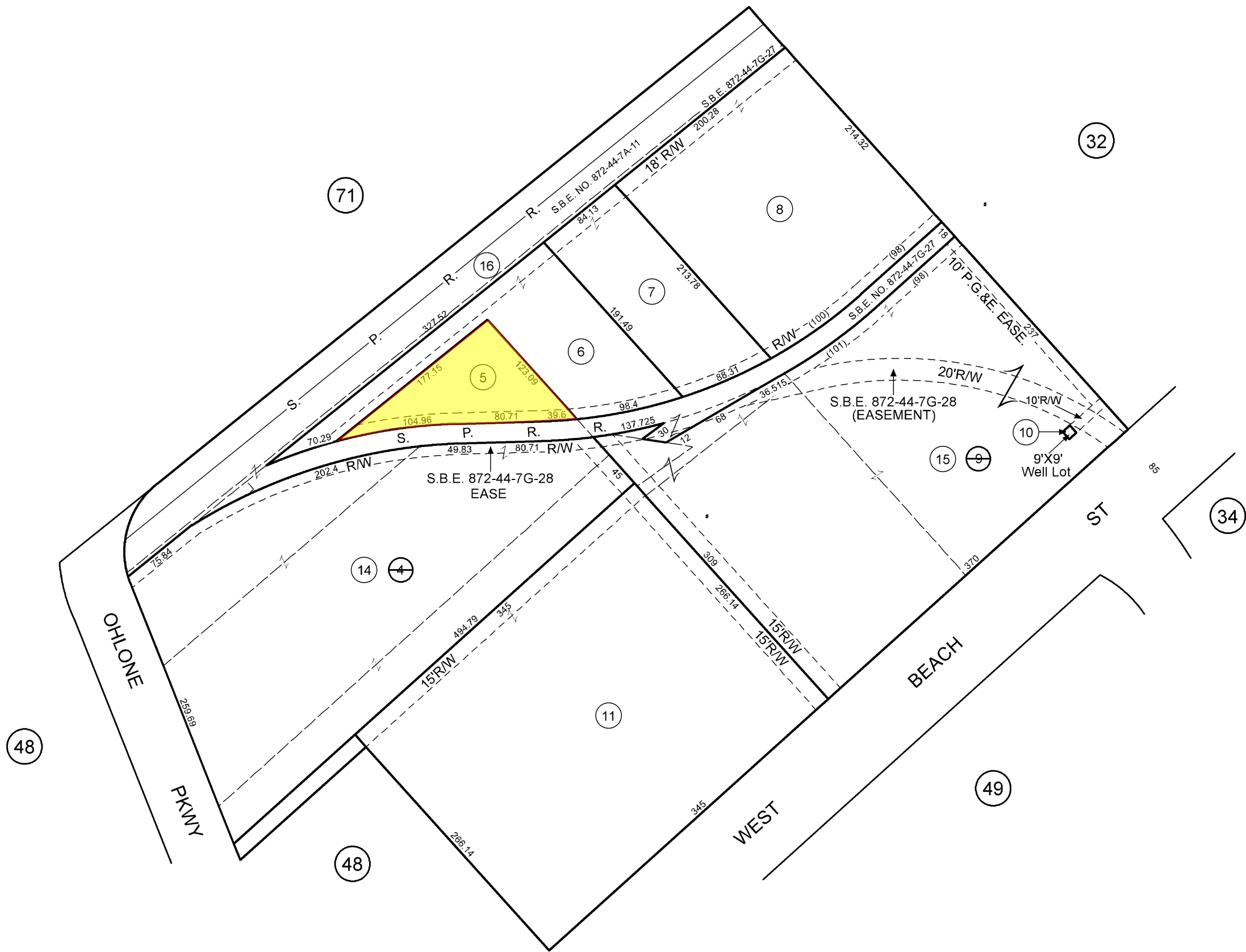
FOR TAX PURPOSES ONLY

THE ASSESSOR MAKES NO GUARANTEE AS TO MAP ACCURACY NOR ASSUMES ANY LIABILITY FOR OTHER USES. NOT TO BE REPRODUCED. ALL RIGHTS RESERVED.
© COPYRIGHT SANTA CRUZ COUNTY ASSESSOR 1996

CITY OF WATSONVILLE

Tax Area Code
2-021

18-33



Electronically Redrawn 7/11/96 rw (Por to 18-48)
Rev 12/8/97 CB (Added Errington Rd)
Rev 3/8/01 mvm (changed page refs.)
Rev 2/5/07 TD (Spatial Adjustment)
Rev 7/19/07 TD (changed page refs.)
Rev 7/19/07 TD (corr: st name)

Note - Assessor's Parcel & Block
Numbers Shown in Circles.

Assessor's Map No. 18-33
City of Watsonville
County of Santa Cruz, Calif.