

TRACT 718 & POR. TRACT 595

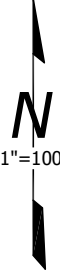
POR. SECS. 29 & 30, T10S., R.10E.

FM 8-28

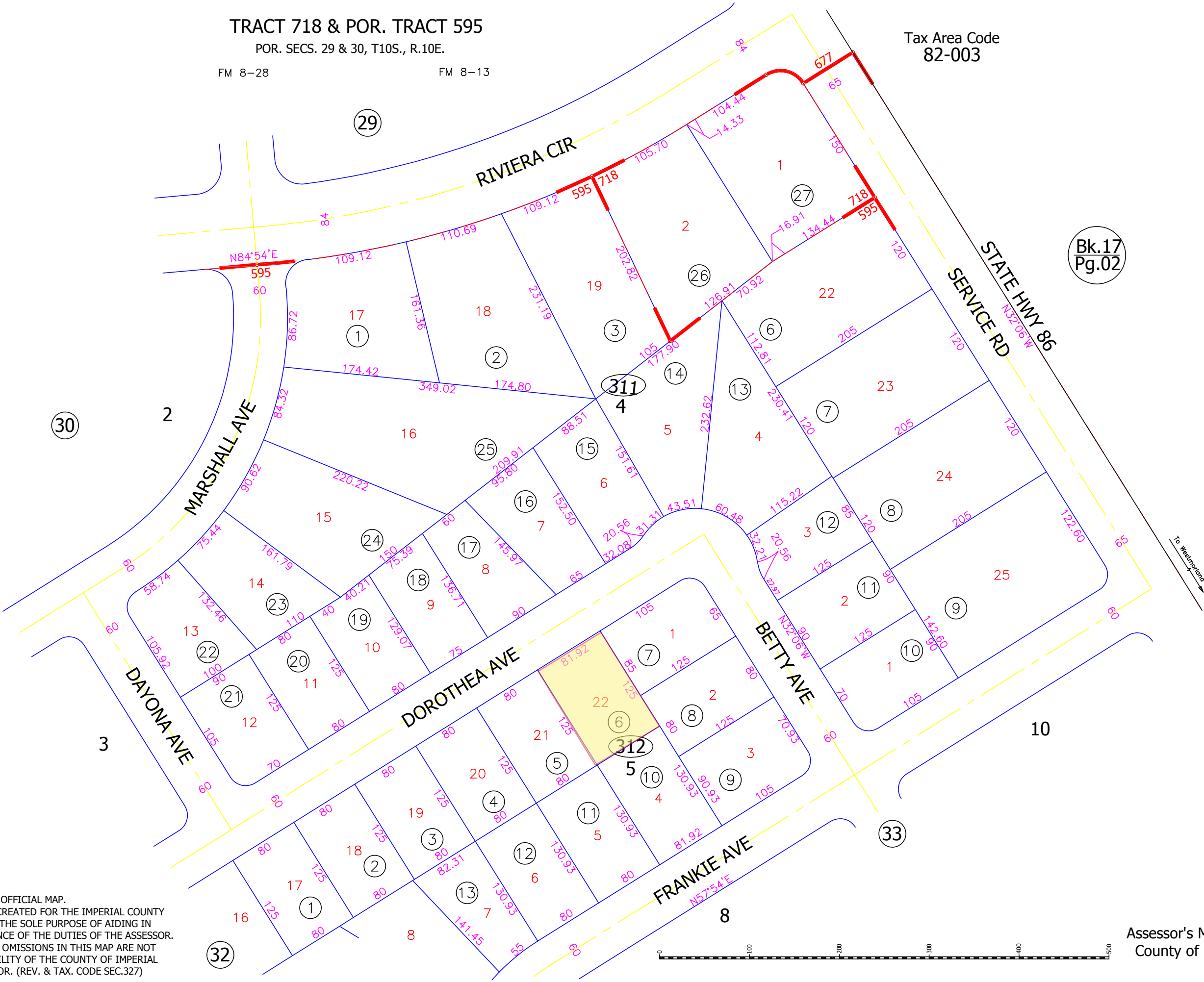
FM 8-13

Tax Area Code  
82-003

14-31



Bk.17  
Pg.02



**DISCLAIMER:**  
THIS IS NOT AN OFFICIAL MAP.  
THIS MAP WAS CREATED FOR THE IMPERIAL COUNTY  
ASSESSOR, FOR THE SOLE PURPOSE OF AIDING IN  
THE PERFORMANCE OF THE DUTIES OF THE ASSESSOR.  
ANY ERRORS OR OMISSIONS IN THIS MAP ARE NOT  
THE RESPONSIBILITY OF THE COUNTY OF IMPERIAL  
OR THE ASSESSOR. (REV. & TAX. CODE SEC.327)