

ORIGINAL

S 1/2 OF NE 1/4 SEC.24 T.6S., R.21E. M.D.B.&M.

Tax Area No.  
56-008 56-021  
56-010 56-097

57-37

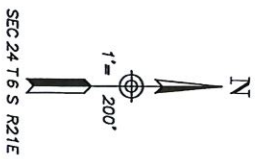
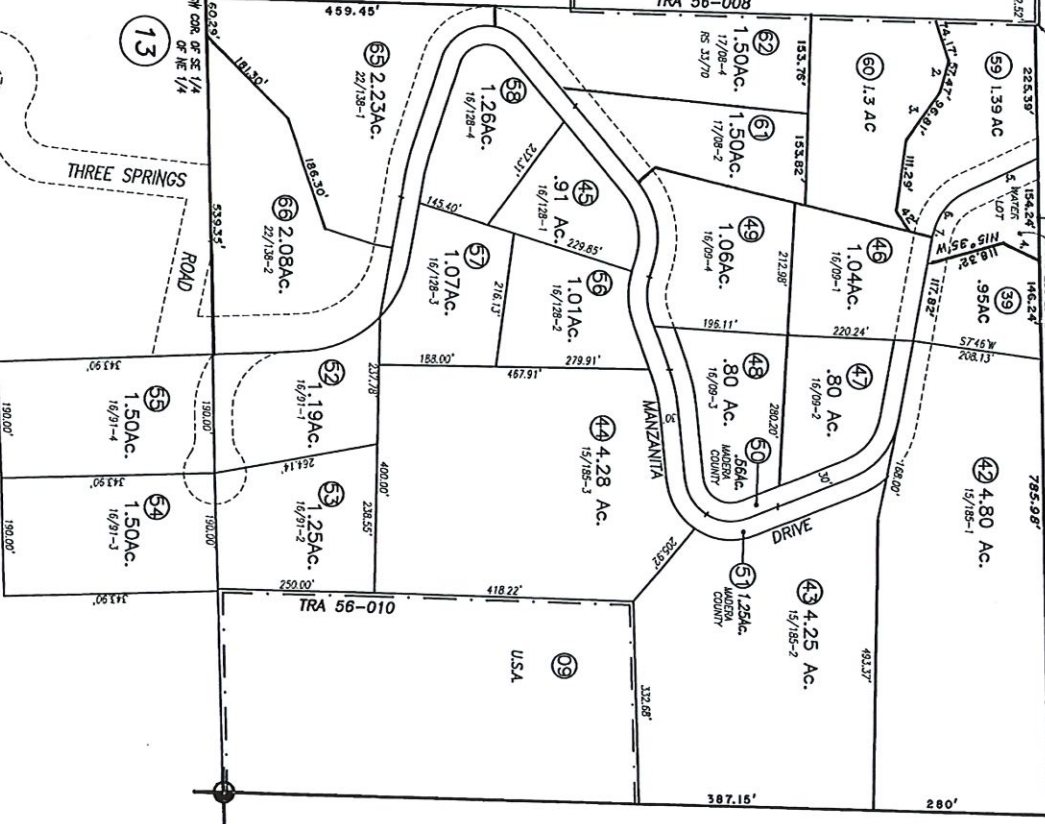
NOTE: This map is for assessment purposes only and is not intended for interpretation of boundary rights, zoning regulations or land division.

1226-23 5'

©2004 Madera County Assessor, All Rights Reserved

NOTE- Assessor's Block Numbers Shown in Ellipses.  
Assessor's Parcel Numbers Shown in Circles.

- 1. SW 20E 6741'
- 2. SW 22E 9841'
- 3. SW 22E 9841'
- 4. SW 30E 17241'
- 5. SW 30E 17241'
- 6. SW 30E 17241'
- 7. W 25W 3182'



Assessor's Map No. 57-37  
Bass Lake School Dist.  
County of Madera, Calif.  
1972