

ORIGINAL

S 1/2 OF NE 1/4 SEC. 24 T. 6S., R. 21E. M.D.B.&M.

Tax Area No.
56-008 56-021
56-010 56-097

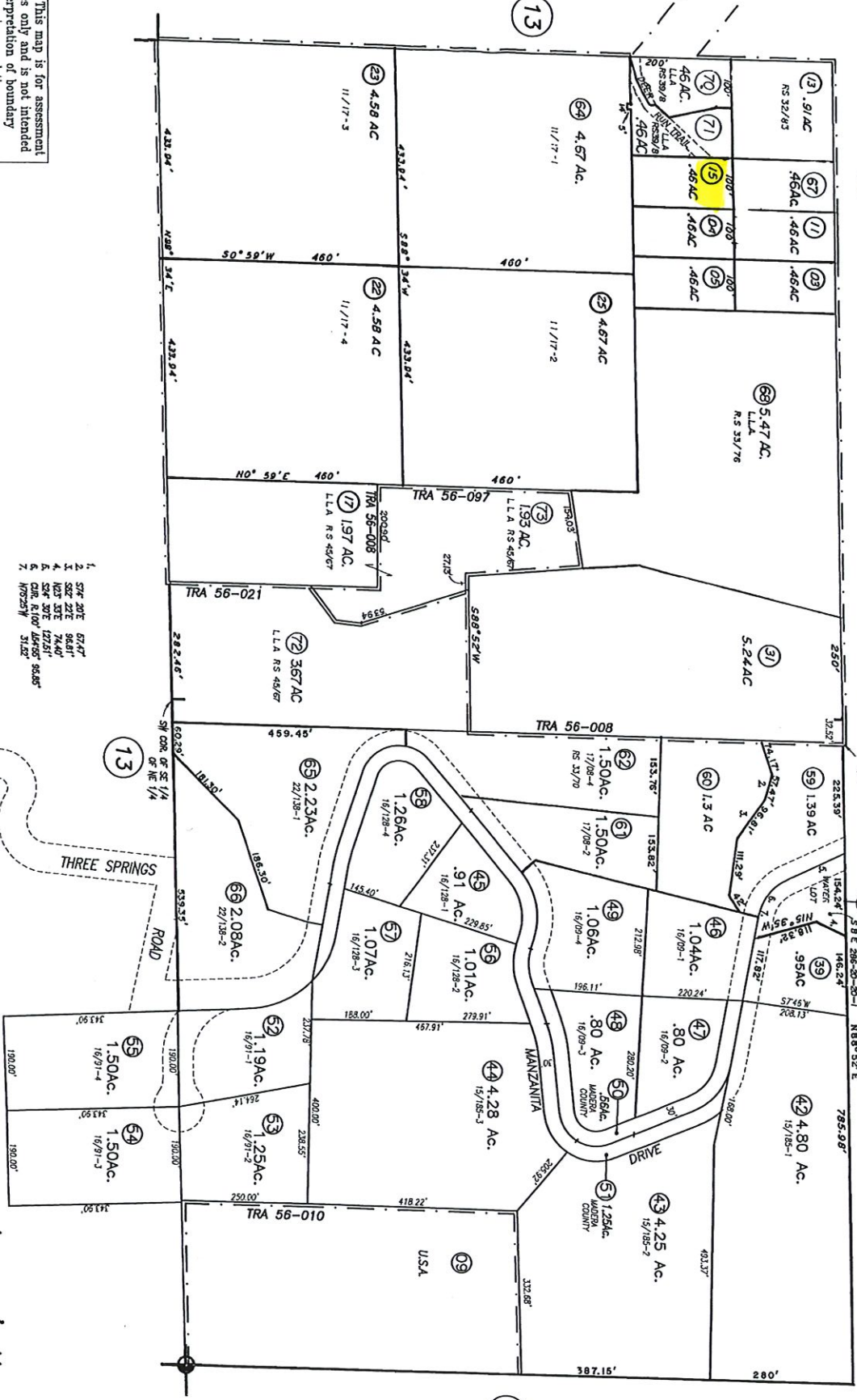
57-37

NOTE: This map is for assessment purposes only and is not intended for interpretation of boundary rights, zoning regulations or land division.

NOTE - Assessor's Block Numbers Shown in Ellipses. ○
Assessor's Parcel Numbers Shown in Circles. ●

1209-73 57 c2004 Madera County Assessor. All Rights Reserved

Assessor's Map No. 57-37
Bass Lake School Dist.
County of Madera, Calif.
1972



- 1. 57* 20E 67.47'
- 2. 57* 20E 67.47'
- 3. 57* 20E 67.47'
- 4. 57* 20E 67.47'
- 5. 57* 20E 67.47'
- 6. 57* 20E 67.47'
- 7. 57* 20E 67.47'