

EXHIBIT "A"

THE LAND REFERRED TO HEREIN BELOW IS SITUATED IN THE CITY OF MADERA, COUNTY OF MADERA, STATE OF CALIFORNIA AND IS DESCRIBED AS FOLLOWS:

Lots 17, 18, 19, 20, 21, 22, 23, 24, 25 and 26 of Block 24 of Lankershim Addition to the Town, now City of Madera, according to map entitled "Map of Lankershim Colony and Addition to the Town of Madera, etc" filed and recorded in the office of the County Recorder of the County of Fresno, State of California, February 5, 1889 in Volume 4 of Maps, at Page 31.

EXCEPTING THEREFROM all minerals and mineral rights, interests, and royalties, including, without limiting, the generality thereof, oil, gas and other hydrocarbon substances, as well as metallic or other solid minerals, in and under the property; however, without the right for any purpose whatsoever to enter upon, into or through the surface of the property as reserved by Southern Pacific Transportation Company, a Delaware corporation in Deed recorded October 30, 1991 as Document No. 9128285 of Official Records, Madera County Records.

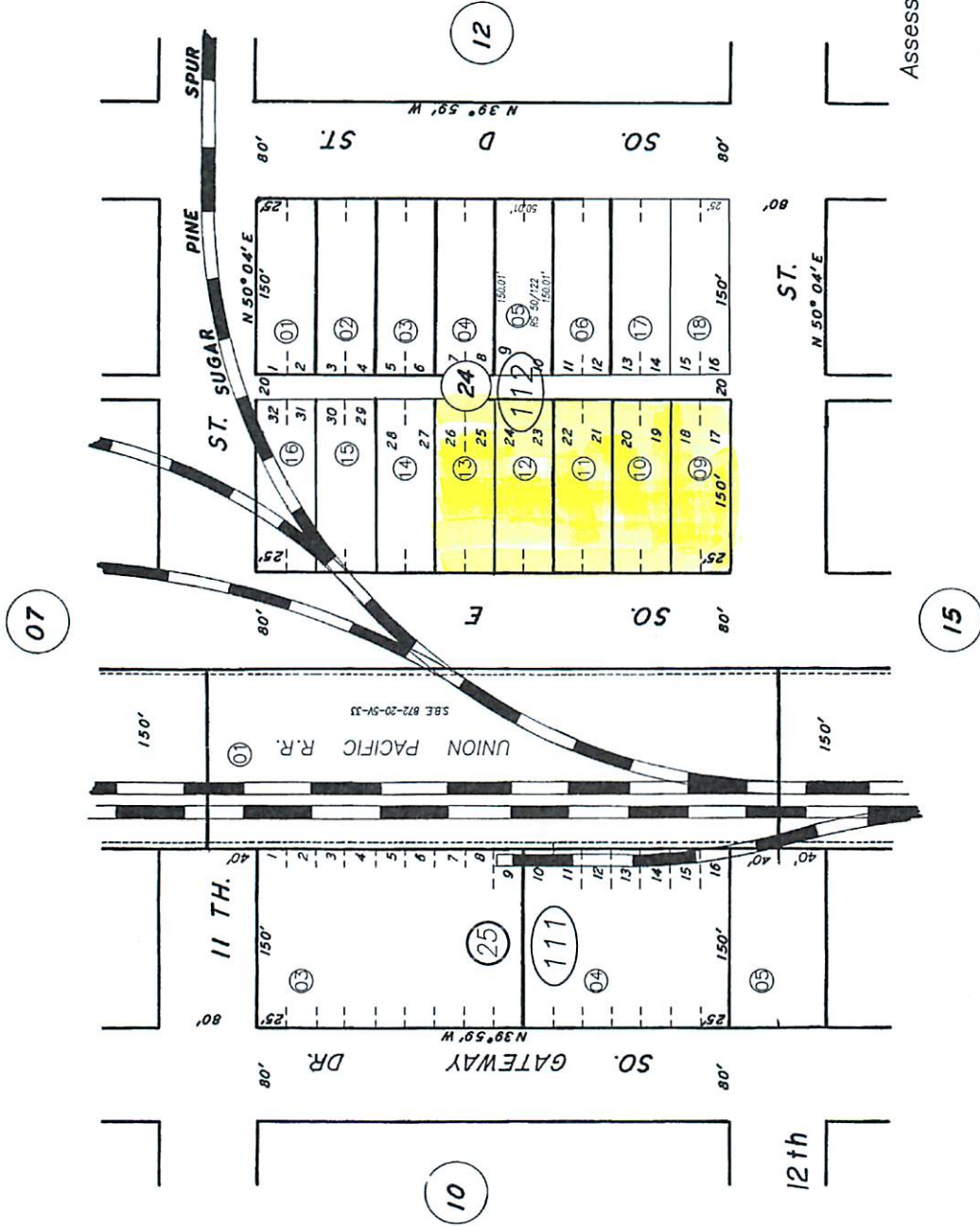
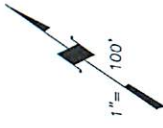
APN: 011-112-009, 011-112-010, 011-112-011, 011-112-012, and 011-112-013.
Lots 17, 18 Lots 19, 20 Lots 21, 22 Lots 23, 24 Lots 25, 26

Separate
Legal parcels
on one
Deed

LANKERSHIM ADDITION

11-11

Tax Area Code
02-040



NOTE: This map is for assessment purposes only and is not intended for interpretation of boundary rights, zoning regulations or land division.

09/09-1-05
-2-18 C/P

NOTE- Assessor's Block Numbers Shown in Ellipses.
Assessor's Parcel Numbers Shown in Circles.

©2004 Madera County Assessor, All Rights Reserved

Assessor's Map No. 11-11
Madera Unified
City of Madera
County of Madera, Calif.
1952

ORIGINAL IN BLUE